

**FAMILY MEDICINE**  
EDUCATION CONSORTIUM, INC.



# Virtual Orientation to the FMEC Annual Meeting for Scholarship Attendees

**August 27, 2024**



**We've got HEART! We've got GRIT!  
We are FAMILY MEDICINE!**



[www.fmec.net](http://www.fmec.net)



Please  
introduce  
yourself in  
the chat!

**Use the chat or unmute yourself to ask  
questions or answer our questions**

**Please mute when you are not speaking**





# What is the FMEC?

## **About the Family Medicine Education Consortium**

The FMEC is a catalyst, convener, and incubator that connects family physicians and other stakeholders to improve the health communities by strengthening family medicine, primary care and medical education. The FMEC serves 14 states and the District of Columbia in the northeast region of the U.S., working with 60 medical school departments of family medicine, over 200 family medicine residency programs, and thousands of family physicians and other health care providers in community settings.

Through an Annual Meeting for nearly 1,000 health professionals, annual awards, learning communities, and quality improvement projects, the FMEC inspires medical students to seek careers in family medicine, strengthens academic family medicine through faculty development and leadership experiences and stimulates innovative approaches to primary care service delivery.



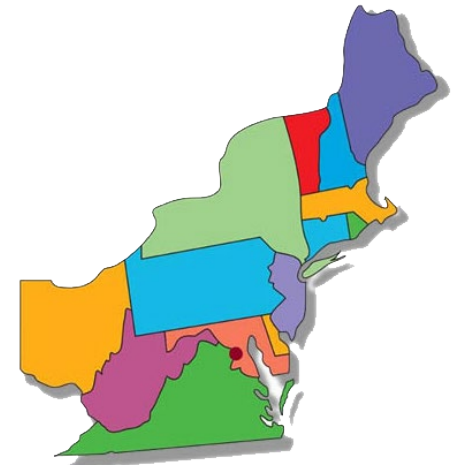
# Where do we work?

## Northeast Region

Connecticut \* Delaware \* Massachusetts \* Maryland \* Maine \* New Hampshire \* New Jersey \*  
New York \* Ohio \* Pennsylvania \* Rhode Island \* Vermont \* Virginia \* West Virginia \* Washington DC

### FMEC Goals

- Promote family medicine and primary care to students
- Support residents as they transition in their careers
- Strengthen academic family medicine
- Create and sustain quality improvement initiatives
- Stimulate innovative approaches to primary care service delivery







Congrats!

## What does your scholarship cover?

### Your scholarship includes:

- FMEC membership for one year
- Annual Meeting registration fee
- All conference-provided meals and breaks
- Two (2) nights in the hotel (double bedded room shared with another scholarship student)
- Admittance to Residency Fair and all academic programming
- One-on-one support from the FMEC Student Coordinator
- A pre-meeting orientation and Q&A session to prepare you for the meeting

*Travel to the conference and parking are not covered.  
Incidentals are not covered.*

# Where is the meeting?

**Philadelphia Marriott**  
1200 Filbert Street  
Philadelphia, PA 19107



If you have any questions, please contact Jennifer Stamper:  
[jennifer.stamper@fmec.net](mailto:jennifer.stamper@fmec.net)

# Navigating the FMEC Annual Meeting

## Schedule at a Glance

### Wednesday, September 18, 2024

4pm–7pm Early Arrivals Registration

### Thursday, September 19, 2024

11am–7pm Registration

7:30am -12pm Business Meetings

8am–6pm Preconferences (separate registration)

6pm–7pm FMEC Presidents Welcome Reception  
(invitation only)

### Friday, September 20, 2024

7am–8:30pm Registration

8am–12pm Exhibitor Set-up

9am–12:30pm Sessions (9-10, 10:15-11:15, 11:30-12:30)

10am–1pm Residency Fair Set-up

12pm–5:30pm Exhibitor Booth Hours

### Friday (continued)

12:30pm–2pm Opening Plenary and Awards (lunch)

2:30pm–5pm Sessions (2:30–3:30, 3:45–4:45)

4:45pm–5:30pm Evening Break (visit the exhibits)

5:30pm–7pm Evening Plenary and Awards (dinner)

7pm - 9pm Residency Fair

### Saturday, September 21, 2024

7am–5pm Registration

7am–8am Breakfast Discussion Tables

8am–2:30pm Exhibitor Booth Hours

8am–12pm Sessions (8-9, 9:15-10:15, 11-12)

12pm–2:30pm Learn at Lunch (Poster Sessions, Clinical Camps)

2:30pm–3:30pm Sessions (2:30–3:30)

3:45pm–4:45pm Closing Plenary and Awards

4:45pm–6:45pm Residency Fair



# Navigating the FMEC Annual Meeting

## Educational Programming:


Workshops and Seminars are 1 hour

Research and QI = 30 mins (2 per 1-hour block)

Lecture Discussions = 20 mins (3 per 1-hour block)

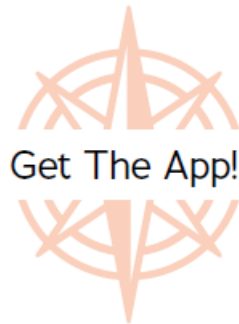
Papers = 15 mins (4 per 1-hour block)

Clinical Success Stories, Power Stories,  
Speed Presentations = 5-7 mins



(ACGME)	Accreditation Council for Graduate Medical Education
(ADSU)	Addiction/Substance Use
(ADV)	Advocacy
(NM)	Art/Narrative Medicine
(CE)	Community Engagement or Involvement
(COVID)	Covid 19
(DEI)	Diversity, Equity and Inclusion
(DMCC)	Disease Management/Clinical Care
(F)	Faculty
(IH)	Integrative Med/Whole Person Health
(INN)	Innovation
(MCH)	Maternal and Child Health
(MH)	Mental Health
(NT)	Nutrition
(OSTEO)	Osteopathic
(POCUS)	Point of Care Ultrasound
(PRO)	Procedures
(PTSIP)	Preparing to Succeed in Practice
(RESQI)	Research/Quality Improvement
(R)	Resident
(REPRO)	Reproductive Health Care
(RESQI)	Research/Quality Improvement
(RM)	Rural Medicine
(S)	Student
(SDOH)	Social Determinants of Health
(WELL)	Wellness

# Plan your schedule in advance!



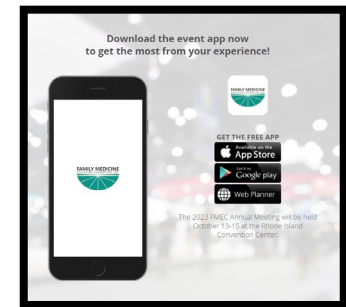
To download the mobile app, search the App Store or Google Play for “FMEC”.

**Login:** the email address you used for registration

**Password:** fmec2024

## With the mobile app, you can:

- Stay organized with real-time event information
- Receive on-site messages from FMEC
- Build a personalized schedule
- Search by day, track or speaker name
- Take notes and download event handouts and presentations
- Rate the sessions you attend and add comments
- Find attendees and connect with your colleagues through Friends
- Share your event photos and experiences with the Activity Feed
- And much, much more!



# Can't Miss Events

**Friday Lunch**  
September 20, 12:30pm



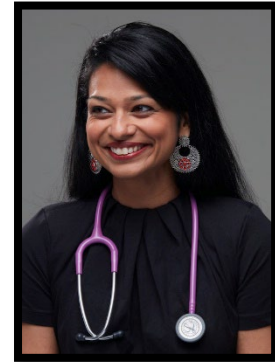
**Margot Savoy, MD, MPH**  
Physician Wellness

**Friday Dinner**  
September 20, 5:30pm



**Jim Zervanos**  
Lessons from a Patient

**Saturday Afternoon**  
September 21, 3:45pm



**Anita Ravi, MD, MPH**  
Gender-based Violence



**Two opportunities to visit the Residency Fair!**

**Friday, September 20: 7pm-9pm** (after plenary speaker and dinner)

**Saturday, September 21: 4:45pm-6:45pm** (then free night!)

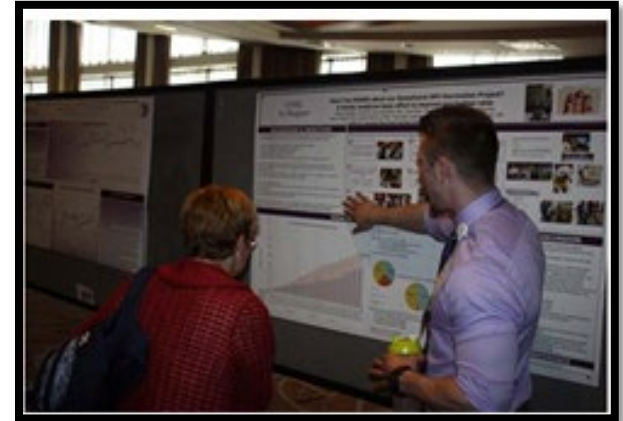
# If you are presenting a poster:

**Poster set-up time:** Saturday morning from 10:30 am – 12:00 noon.

**Where:** Headhouse Tower, 3<sup>rd</sup> Floor (bridge)

**Poster Session I:** Saturday, 12pm – 1:10pm

**Poster Session II:** Saturday, 1:20pm-2:30pm



- Presenters must bring their own poster supplies, such as poster, push pins, scissors, tape, etc.
- Poster tear-down is Saturday afternoon no later than 2:30 pm.
- Poster presentation area is a 4 X 8 cork-board surface mounted on an easel. Each easel is numbered; refer to the Conference Program to find your poster number.
- Session I presenters: please wrap up so Session II can put posters up.
- Watch the recorded Zoom meeting about presenting a poster (see the FMEC website).



# Things to know...

- **REGISTRATION** opens at 7am on Friday, September 20 (also open Wednesday and Thursday)
- **HOTEL CHECK-IN is 4:00pm** but you can check to see if your room is ready early. If you requested housing, you do not need a confirmation number to check into the hotel. Your name is on our student rooming block list. Go to the hotel check-in desk and give them your name. A credit card is required to secure any incidentals you may incur, but the lodging costs are on our master bill.
- **IMPORTANT:** Please be aware: Your roommate may not check in until Saturday. All rooms have at least 2 students in them unless there are last minute cancellations. [If you have secured a private room, this does not apply to you.](#)
- **LUGGAGE** - If your room is not ready, please do not bring your luggage into the programs, but rather check it at the front desk of the hotel.



# Things to know...

- **THURSDAY NIGHT STAYS** - These are not covered by your scholarship award. If you contact the hotel directly for a Thursday night stay, this will be at your cost.
- **PARKING** is not covered by your scholarship.
- **DRESS IS BUSINESS CASUAL** - wear comfortable shoes! You will be doing a lot of walking.
- **BE FLEXIBLE!** Opportunities to network with other physicians from the meeting are invaluable. Don't be afraid to sit and chat between sessions during these chance encounters.
- **STUDENTS OF ALL YEARS** are welcome to attend any session! Sessions coded as (S) are especially for student audiences.
- **THE RESIDENCY FAIR** happens on both Friday (evening) and Saturday (late afternoon).



# Which programs will be represented at the Residency Fair?

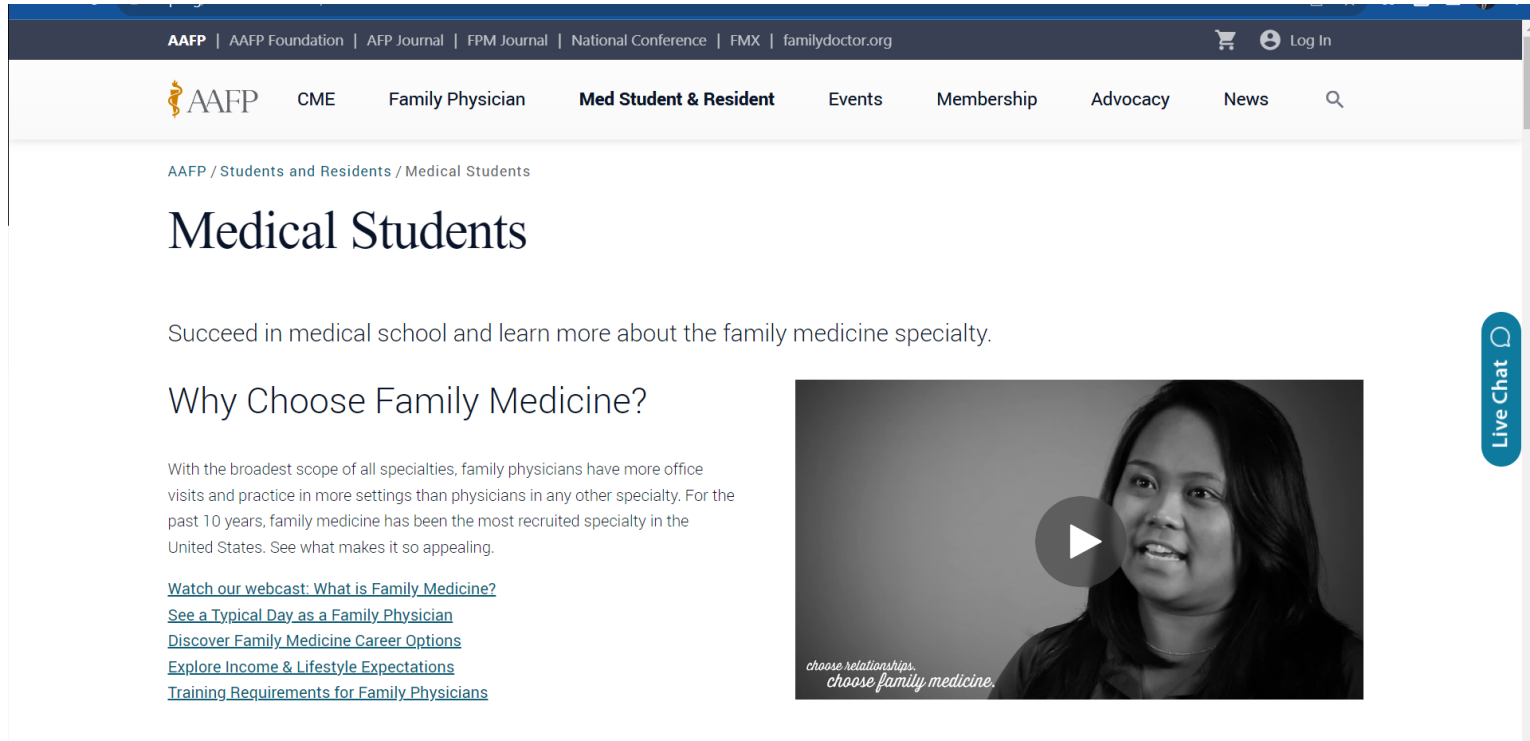
- For a full list of the programs, visit the conference app and look at show documents. There is also a listing in the printed program.

- Door Prizes each night:

Each scholarship student will receive a door prize card for each night of the residency fair. If you have 5 programs sign your card during the event, you can drop your completed entry into the bins for the chance to win some great prizes!

- Which questions should you be asking?
- How can you make the most of your time there?

# Resources from the AAFP



The screenshot shows the AAFP website's 'Medical Students' page. The navigation bar includes links for AAFP, AAFP Foundation, AFP Journal, FPM Journal, National Conference, FMX, familydoctor.org, a shopping cart, and a Log In button. The main menu features CME, Family Physician, Med Student & Resident (highlighted), Events, Membership, Advocacy, and News. The breadcrumb trail reads 'AAFP / Students and Residents / Medical Students'. The page title is 'Medical Students'. A sub-header reads 'Succeed in medical school and learn more about the family medicine specialty.' The main heading is 'Why Choose Family Medicine?'. Below this, a paragraph states: 'With the broadest scope of all specialties, family physicians have more office visits and practice in more settings than physicians in any other specialty. For the past 10 years, family medicine has been the most recruited specialty in the United States. See what makes it so appealing.' There are four hyperlinks: 'Watch our webcast: What is Family Medicine?', 'See a Typical Day as a Family Physician', 'Discover Family Medicine Career Options', and 'Explore Income & Lifestyle Expectations Training Requirements for Family Physicians'. A video player is embedded on the right, showing a woman with a play button overlay. The video has the text 'choose relationships. choose family medicine.' at the bottom. A 'Live Chat' button is visible on the right edge of the page.

AAFP | AAFP Foundation | AFP Journal | FPM Journal | National Conference | FMX | familydoctor.org

AAFP CME Family Physician **Med Student & Resident** Events Membership Advocacy News

AAFP / Students and Residents / Medical Students

## Medical Students

Succeed in medical school and learn more about the family medicine specialty.

### Why Choose Family Medicine?

With the broadest scope of all specialties, family physicians have more office visits and practice in more settings than physicians in any other specialty. For the past 10 years, family medicine has been the most recruited specialty in the United States. See what makes it so appealing.

[Watch our webcast: What is Family Medicine?](#)  
[See a Typical Day as a Family Physician](#)  
[Discover Family Medicine Career Options](#)  
[Explore Income & Lifestyle Expectations Training Requirements for Family Physicians](#)

*choose relationships.  
choose family medicine.*

Live Chat

<https://www.aafp.org/students-residents/medical-students.html>



# Resources from the AAFP

AAFP | AAFP Foundation | AAFP Journal | FPM Journal | National Conference | FMX | familydoctor.org

AAFP CME Family Physician **Med Student & Resident** Events Membership Advocacy News

AAFP / Students and Residents / Medical Students / Applying to Residency / Residency Interview Guide / Residency Interview Questions

## Residency Interview Questions

### Ask the right questions to find your match

Family medicine residencies reflect the broad scope and versatility of the specialty. Therefore, programs can be quite unique and different from one another. While every family medicine residency program is required to meet certain specifications and minimum requirements for accreditation, each has autonomy to adapt its program to meet the needs of its community, the strengths and interests of its faculty, and the training goals of its residents.


A strength of the family medicine specialty is the exposure to a variety and breadth of curriculum during residency, which helps you evolve and hone your skills and knowledge when starting out in a practice and advancing your career. When considering a residency, weigh each program's curriculum, faculty, benefit package, community, and other offerings. Family medicine residencies should provide well-rounded training, even for residents with an interest in a focused area, like sports medicine.

Use the questions below during interviews to learn about a program's focus areas, strengths, challenges, and to determine if they fit your preferences. These questions were developed with input from family medicine residency program directors and are organized by topic area.

[General Questions for Faculty and Program Directors](#)  
[Questions for Residents](#)

Topic-specific Questions:

- [Women's Health and Obstetrics](#)
- [Procedural Skills](#)
- [Leadership and Advocacy](#)
- [Global Health and International Service](#)
- [Osteopathic Manipulative Medicine](#)



<https://www.aafp.org/students-residents/medical-students/become-a-resident/applying-to-residency/prepare-for-residency-interviews/questions.html>



# Resources from the AAFP

## General Questions for Faculty and Program Directors

- Where are most graduates located?
- What types of practices do graduates go into after residency?
- How do you perceive your program compared to other programs?
- What are the program's strengths? What makes your program unique?
- What kind of feedback have graduates given you about your program?

## Questions for Residents

- What was the most important factor that made you choose this program?
- What is a typical week/month/year like for a resident in PGY-1, PGY-2, and PGY-3?
- What is call like? What kind of backup and supervision is provided?
- When leave of absence becomes necessary, what happens?
- What community service opportunities are available?

## Women's Health and Obstetrics

- Which obstetric procedures are available in the program?
- What are the learning processes for training in obstetrics (OB)? Which faculty teach obstetrics?

## Procedural Skills

- Could you describe your curriculum as it relates to procedural skills in family medicine? Which procedural skills training does the program offer?
- What is your philosophy regarding procedural skills in family medicine?
- How do residents get exposure and training in procedural skills?

## Leadership and Advocacy

- Does the program have leadership curriculum?
- Are residents supported in external and/or organizational activities?

## Global Health and International Service

- What is the goal of the international rotation?
- Can you describe the field experience (e.g., clinical activities, public health initiatives, community activities, patient education, or other activities)?
- What is the cost of international experiences to residents?

## Osteopathic Manipulative Medicine

## Underserved Populations/SDOH

## Anti-Racism, Diversity, Inclusion

## Fellowships

## Academic or Research Careers

## Sports Medicine

## Integrative Medicine

## Well-Being and Culture



- **What should you do onsite if you have questions or problems**  
Please come to the FMEC Registration desk located on Level 3 (Foyer) of the hotel.
- **What will happen after the meeting?**  
You will be asked to write up (briefly) your experience to share with our donors.  
Your scholarship comes with an annual student membership to the FMEC.  
You will receive communications throughout the year to stay in touch with us!
- **How can you stay connected to family medicine?**  
Connect with the FMIG at your school, if possible.  
Join the AAFP as a student member!



# Questions about the FMEC or the Meeting?

