



2021
FMEC ANNUAL MEETING
PROGRAM

*Family Medicine: The Unbreakable
Bridge to Health Equity*

October 8-10

2021

*Wyndam Grand Pittsburgh Downtown Hotel
600 Commonwealth Place, Pittsburgh, PA 15222*

FAMILY MEDICINE
EDUCATION CONSORTIUM, INC.





Senior Focused Primary Care Physician Opportunities Central & Northeast Pennsylvania

At Geisinger, our innovative ideas are inspired by the communities and families we serve. Since health changes with age, healthcare should too. To meet the unique needs of our senior patient population, we have implemented community-focused initiatives like Geisinger 65 Forward to provide a new, comprehensive approach to primary care for people 65 and older.

Geisinger is seeking experienced board certified/board eligible Family Medicine, Internal Medicine and/or Geriatric trained physicians for immediate and late fall opportunities.

Why join Geisinger?

- \$100,000 recruitment loan
- Up to \$150,000 medical school loan repayment
- Excellent annual compensation (starting at \$250,000) and benefits, including relocation, malpractice and tail coverage
- 15 paid CME days and \$3,500 for CME activities
- Professional opportunities for mentorship, growth and advancement



To learn more or apply, contact
CMRecruitmentTeam@geisinger.edu



From the FMEC President

Welcome to the FMEC Annual Meeting! We are so excited to be welcoming you back to an in-person meeting. We have all missed the spontaneous connections and conversations that just can't be replicated on any virtual platform. With that being said, we also recognize that we are out of practice and maybe even a bit nervous about gathering face to face. So, along with our wonderful host hotel, we are taking every precaution, from required vaccinations to face masks to hospital-grade air handling to make our time together as safe as possible.

Pittsburgh is a great city and our local Host Committee has helped curate an incredible meeting agenda. Our plenaries will share innovative approaches to increasing access to care, improving quality and addressing equity. There will be a wide range of sessions covering pertinent clinical, educational, social and policy topics. And, we will have a socially-distanced residency fair with the welcome return of in-person conversations and discussions about the wide variety of residency education options.

Welcome back! It will feel great to have "the family" back together. Let the FMEC partner with you to realize the full potential of Family Medicine.

Raj

Donald Raj Woolever, MD, FFAFP

Maine-Dartmouth Family Medicine Residency



Tracey Conti, MD

UPMC McKeesport
Family Medicine Residency



Amy Crawford - Faucher, MD, FAAP

Allegheny Health Network
Forbes Family Medicine Residency

From the Host Committee Co-Chairs

On behalf of the Host Committee, we are excited to welcome you to Pittsburgh for the 2021 FMEC Annual conference. Virtual visits, conferences and other experiences have left a void in our interpersonal connections so we are excited to meet all of you safely in person! We are honored to co-chair this event as we come together to discuss and shape the future of Family Medicine.

We are committed to delivering a high-quality, creative, and professional experience, while sharing Pittsburgh's rich culture and tradition with you. In addition to robust clinical education, our exciting program will allow you to reflect upon and celebrate our accomplishments, renew friendships and extend your networks, as we jointly explore current and future educational directions.

We look forward to seeing all of you and we welcome you to the City of Bridges!

Chief Executive Officer

Thank You!



Laurence C. Bauer, MSW, MEd

FMEC thanks Larry Bauer for 30 Years of Leadership

The FMEC Board of Trustees (www.fmec.net) announced that Laurence Bauer, the founding CEO, has decided to step aside and welcome a new CEO to lead FMEC.

"We are so grateful for the legacy Larry has nurtured within the FMEC community over the past three decades," states Dr. Raj Woolever, FMEC president. "Family Medicine in the northeastern United States and across the country has benefitted from Larry's creativity, endless energy and ability to connect people and ideas to improve and advance the world of Family Medicine. He recruited all of us, and so many others before us, to serve as Board members of this dynamic non-profit, shaping the future of Family Medicine through education, innovation, and inspiration."

Those interested in recognizing Larry's accomplishments can make a gift to the FMEC Legacy Campaign. Visit <https://www.fmec.net/legacy-campaign> for more information.

"We send rounds of applause echoing across the country to Larry for his contributions to the Family Medicine movement and to the FMEC, in particular. As Larry is fond of saying, 'It turns out that Family Medicine really is rocket science!' and in the FMEC, he's built an organization poised to propel the Family Medicine movement into the future."

Welcome!



Scott G. Allen, MS

FMEC welcomes Scott G. Allen, MS as Our New CEO on November 1, 2021

It is with great pride and enthusiasm, the FMEC Board announces Scott G. Allen, MS as its next CEO beginning November 1, 2021.

With over 30 years' experience managing nonprofits, including 24 years in health care, Scott brings extensive administrative skills along with health care education and quality improvement experience to FMEC. He is passionate about primary care and supporting physicians and physicians-in-training to improve their practices and communities.

Scott began his career at American Academy of Pediatrics (AAP), working in fundraising, specialty education, and clinical policy development. Moving to the state level, Scott served as Executive Director of the Illinois Chapter AAP (Chapter) for fifteen years. Scott's success turned the Chapter into a respected education and advocacy organization and motivated healthcare providers to collaborate, including family physicians. Most recently, Scott expanded initiatives and secured new funders at the Public Library Association.

"Our Board is impressed with Scott's successful association management, his commitment to primary care and his strategic instincts," comments Woolever. "Scott has great experience as a CEO, a strong track record of fundraising and proven capacity as an education program planner. We look forward to his leadership of FMEC."

Table of Contents

Welcome	3
Thank You and Welcome CEO Message	4
New to this Meeting?	7
General Conference Information	8
Descriptions of Presentation Formats	9
Plenary Speakers	10
Host Committee Organizations/FMEC Board of Trustees	11
Award Winners	12 - 14
Award Sponsors	15
Preconference Programming	16
Healthcare Innovators Network Agenda	17
Additional Meetings and Events	18
Programming:	
Schedule at a Glance (Friday)	19
Friday, October 8	20 - 25
Schedule at a Glance (Saturday)	26
Saturday, October 9	27 - 36
Schedule at a Glance (Sunday)	37
Sunday, October 10	38 - 41
President Level Partner	43
Partners	44 - 45
Exhibitors	46
Preparing to Succeed in Practice Partners	47
Residency Fair Participants	50 - 52
Breakfast Scholarly Table Discussions	53
Poster Session 1	54 - 57
Poster Session 2	58 - 61
Hotel Map	62 - 63



We invite you to share our Annual Meeting with others and tell them what you like about the FMEC!

#FMEC_2021

Twitter Handle: @FMEC_

Facebook: fmeinc

Instagram: fmeinc_inc

ALTUS

ASSESSMENTS



Casper

Evaluate applicants' social intelligence and professionalism with an open-response situational judgement test



Duet

Find applicants whose values in a program best align with what you have to offer



Snapshot

Preview applicants' communication skills and motivation using video response before deciding who to interview



Altus Insights

Tie together all these assessments and data points in one place for your team to view, analyze, and make important decisions.

Visit the Altus Assessments booth to learn how Altus Suite can improve your admissions process.



altus.as/GME

Tips and tricks on how to navigate the meeting

Review the program:

Identify one or two sessions in each time block that especially appeals to you and immerse yourself in the programming you highlight.

Mobile App:

Download the mobile app "FMEC" and build your schedule for each day.

Networking!

This meeting is all about meeting people! Find others who share your interests and spend time in hallway conversations. Don't be afraid to skip a session and share a cup of coffee with others.

Spend time with Exhibitors.

Make time for these opportunities. Hear their ideas and share what you know. Meeting with the exhibitors will enrich your learning and enhance your overall experience.

Residency Fair (Fri and Sat night):

Join us! There will be 60+ Residency Programs in attendance in the Kings Garden. The fair will follow dinner on both Friday and Saturday nights.

Residents:

Check out sessions that are keyed as "R". These are specifically geared towards residents, though you are welcome to attend any session that interests you.

Students:

Check out the sessions that are keyed as "S". Chance encounters with faculty and residents during the residency fair are invaluable. Students of all years are welcome and are encouraged to attend any presentations during the meeting.



Wireless Internet Access Information

WiFi Name: FMEC

Password: FMEC2021

Conference App

Download the FMEC Conference app by searching the App Store or Google Play for "FMEC"

Login: your email address

Pswd: fmec2021

General Conference Information

Hotel

Wyndham Grand Pittsburgh Hotel
600 Commonwealth Place
Pittsburgh PA 15222

Smoking

This hotel has a smoke-free policy.

Parking

Valet parking only - \$35.00 overnight stay
(\$25.00 USD daily)
Visit downtownpittsburgh.com/parking to learn
about parking options in the area.

Airport Transportation:

This hotel does not provide shuttle service.

Cancellation and Refund Policy

The FMEC must receive written notice of cancellation by October 1, 2021 to obtain a refund. Requests for full cancellations will be refunded less a \$50 administrative fee. Cancellations after October 1, 2021 are not eligible for a refund. No-shows are also not eligible for a refund. The FMEC is not responsible for monies registrants may have spent on penalty or non-refundable airline tickets or hotel deposits in the event this course is cancelled or sold out. Before purchasing your airline ticket, make sure that you have received your event registration and hotel confirmation. Please notify the FMEC of cancellation by e-mailing denise.steele@fmec.net.

Photo/Video Release

By registering for The 2021 FMEC Annual Meeting, attendees understand that the FMEC has the right to include an photographs and videos taken during the meeting in its promotional materials. If you do not want your image to be used in promotional materials please contact denise.steele@fmec.net



We invite you to share our Annual Meeting with others and tell them what you like about the FMEC!

#FMEC_2021

Twitter Handle: @FMEC_

Facebook: fmecinc

Instagram: fmec_inc

Description of Presentation Formats

Workshops (2 hour session)

Workshops are designed to transmit specific skills and should be directed toward learning methodologies and strategies for approaching problems in teaching students, residents and faculty. The participants should be actively involved and should be able to acquire an understanding of various approaches to these problems.

Seminars (1 hour session)

Seminars are designed to transmit specific knowledge in a given area and consist of a combination of formal presentations and group discussions.

Research and QI (30 minutes)

Research presentations report rigorously designed investigations. Presentations will be followed by a moderator-directed discussion.

Paper Sessions (15 minutes)

Paper presentations provide an opportunity to present to a wide audience about research, scholarship, curricular design, teaching programs, community service, and any other topic of interest related to Family Medicine. Projects under development are also accepted in this category.

Lecture Discussion (20 minutes)

The L/D format involves a 20 minute presentation including participant discussion. This format is to be used for sharing information with an audience that relates to a clinical, educational or policy topic, report of a project and/or activity, introduction of a policy issue, etc.

Poster Sessions

(60 minute presentation)

The poster session serves as an informal exchange of information on various topics of interest in Family Medicine.

- **Poster Session 1 is 12:00 – 1:00 pm**
Poster setup starts at 10:00 am
Posters must be removed from board no later than 1:30 pm
- **Poster Session 2 is 2:15 – 3:15 pm**
Poster setup starts at 1:30 pm.
Posters must be removed from board no later than 3:45 pm

Speed Presentation (7 minutes)

This format provides the presenter 7 minutes and a maximum of 5 slides to share ideas and information in a focused, direct manner. A series of 6 to 7 speed presentations will be combined and the presentations will be followed by a 15 minute discussion period that offers an opportunity for participants and presenters to engage in a discussion.

Clinical Success Story (7 minutes)

This venue allows presenters to (a) share a patient story which has inspired their own passion to serve and care for others or that reveals one or more of the core attributes of Family Medicine or (b) share a story that addresses the teaching of students/residents.

Breakfast Scholarly Table Discussions

This opportunity during the Saturday breakfast includes both scholarly and networking discussions. This is intended to share experiences and ideas related to the title of the discussion.



TRACKS

(S)	Student Focused
(R)	Resident Focused
(IM)	Integrative Medicine
(LM)	Lifestyle Medicine
(MCH)	Maternal Child Health
(OSTEO)	Osteopathic Medicine
(PTSIP)	Preparing To Succeed In Practice
(PRO)	Procedures
(NM/FA)	Narrative Medicine/Fine Arts

Plenaries - Beyond Problem Identification - It's Time to Identify Scalable Solutions

Friday, October 8th

A Panel of Speakers from the Allegheny County Schools Health Insurance Consortium and the Rosen Hotels & Resorts

The Business Community and the Social Determinants of Health: Partnerships Waiting to Happen

It is now well recognized that the social determinants of health play a dominant role in the health of individuals, communities and the nation. If we are to improve health on all levels, we need to develop strategies that improve access to nutritious food, well-functioning schools, affordable housing, employment opportunities and access to health services especially robust primary care. Many in primary care are trying to address the SDoH issues through their clinical services and community outreach. We know that the problems lie in the community. Using an appreciative inquiry problem solving model, the first step is to search for positive and effective models in the community that are showing how substantive change can address and even eliminate the SDoH. This plenary presentation will showcase two innovative employer – sponsored models that are revealing how the business community can create positive outcomes.



Allegheny County Schools
Health Insurance Consortium



ROSENCARE[®]

PROVinsure
AMERICA'S BEST INSURANCE VALUE[™]

Saturday, October 9th

James Withers, MD; Elizabeth Miller, MD, PhD, F SAHM, and Ms. Joanna Papada of the Manchester Bidwell Corporation

Creating Equity for the Underserved, the Homeless and Communities Impacted by Trauma in Pittsburgh, PA

There are a number of people and organizations in Pittsburgh serving those with exceptional needs. The panelists will describe their work and the special programs they have developed. Each has developed an innovative approach to their work. Each program is an innovative, impactful example of solutions that are emerging in response to the crises of our times.



University of Pittsburgh



MANCHESTER BIDWELL CORPORATION

Sunday, October 10th

Andrea Westby, MD, C.J. Peek PhD; Michele Allen, MD, MS; James T. Pacala, MD, MS; Wendy Nickerson

Department of Family Medicine and Community Health , University of Minnesota Medical School Coming Together in Action for Equity, Diversity, and Inclusion: One Department's Way

Family medicine departments see elevating equity, diversity, and inclusion (EDI)* as socially necessary and as powerful in achieving core missions. EDI plays out in three pillars: (1) care delivery and health, (2) workforce recruitment and retention, and (3) learner recruitment and training. People are at very different places with EDI work with regard to knowledge, experience, comfort and confidence. This is a wide-ranging developmental challenge, not a narrow, technical, or quick fix. Our Department's goal is to make a strong start in taking all faculty and staff on a participatory journey that brings changes in everything they do, using inclusive means to this inclusive end.



Department of Family
Medicine & Community Health
UNIVERSITY OF MINNESOTA
Driven to Discover[®]

Host Committee Organizations

**Forbes/Allegheny Health Network
Family Medicine Residency**
Monroeville, PA

**Heritage Valley Health System
Family Medicine Residency**
Beaver, PA

**Penn Highlands
Family Medicine Residency**
Clymer, PA

**Pennsylvania Academy of
Family Physicians**
Harrisburg, PA

**St. Vincent Family
Medicine Residency**
Erie, PA

**University of Pittsburgh
Department of Family Medicine**
Pittsburgh, PA

**UPMC Altoona
Family Medicine Residency**
Altoona, PA

**UPMC Horizon Family
Medicine Residency**
Pittsburgh, PA

**UPMC McKeesport
Family Medicine Residency**
McKeesport, PA

**UPMC Shadyside
Family Medicine Residency**
Pittsburgh, PA

**UPMC St. Margaret
Family Medicine Residency**
Pittsburgh, PA

2021 FMEC Board of Trustees

Donald Raj Woolever, MD
President
Maine-Dartmouth
Family Medicine Residency Program
Augusta, ME

Leon McCrea, II, MD, MPH
President-Elect
Drexel University College of Medicine
Springfield, PA

Pam Vnenchak, MD
Treasurer – Secretary
Lancaster General Health/Penn Medicine
Lancaster, PA

Amy Crawford - Faucher, MD
Immediate Past President
Allegheny Health Network
Forbes Family Medicine Residency
Monroeville, PA

Andrea Anderson, MD, FAAFP
The George Washington
School of Medicine & Health Sciences
Washington, DC

Donald Beckstead, MD, FAAFP
UPMC Altoona Family
Medicine Residency
Altoona, PA

Tracey Conti, MD
UPMC McKeesport
Family Medicine Residency Program
McKeesport, PA

Aaron George, DO
Meritus Health
Hagerstown, MD

Mitchell A. Kaminski, MD, MBA
Jefferson College of Population Health
Philadelphia, PA

Susan T. Kaye, MD
Atlantic Health System
Overlook Medical Center
Summit, NJ

Heather L. Paladine, MD
New York Presbyterian/
Columbia University
Family Medicine Residency
New York, NY

Sarah Ramirez, MD
Penn State Health Hershey
Medical Center
Family and Community Medicine
Hershey, PA

Jennifer Sparks, MD
Greater Lawrence Family Health Center
Lawrence, MA

Molly Talley
Director of Resident
and Student Initiatives
Pennsylvania Academy
of Family Physicians
Harrisburg, PA

Award Winners

2021 FMEC Family Physicians Who are Changing Our World Award

The Family Medicine Education Consortium, Inc. seeks to identify and recognize Family Physicians who have developed innovative projects and programs that have had a positive impact on the world. The FMEC recognizes Family Physicians who have demonstrated significant achievement in promoting the health and well-being of the community at the local, state, national or international levels.



Linda W. Prine, MD
Institute for Family Health
Family Medicine Residency

2021 FMEC Mid-Career Faculty Achievement Award

The Family Medicine Education Consortium seeks to support mid-career faculty with expertise in an area relevant to Family Medicine. It is our intention to identify and acknowledge one mid-career faculty member each year, who has demonstrated significant achievement. The intent of this recognition is to assist faculty who have not yet received tenure approval or otherwise been highly recognized for their efforts.



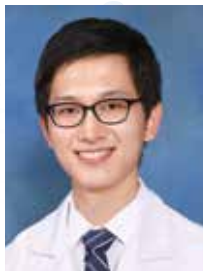
Roger Musa, MD
Aultman Family Medicine Residency



Gretchen Shelesky, MD, MS, FAFAP
UPMC St. Margaret
Family Medicine Residency

2021 FMEC Emerging Leader Award

The Family Medicine Education Consortium seeks to identify, encourage and support promising Family Medicine senior residents, junior faculty and clinicians in practice (three years or less experience) who have the potential to be future leaders in Family Medicine academic and community service efforts.



Kento Sonoda, MD, AAHIVS
UPMC Presbyterian-Shadyside
Family Medicine Residency



Molly Warren-EIDabh, MD
Columbia University/New York-Presbyterian
Family Medicine Residency

2021 FMEC This We Believe Award Winners

Modeled on the successful "This I Believe" project, as heard on National Public Radio, the FMEC offers physicians, physicians-in-training, and medical students engaged in Family Medicine organizations, the opportunity to express their core beliefs about serving others. We believe that sharing our passion for being healers will not only strengthen our ability to serve others, but also will connect us to one another and strengthen our mission in Family Medicine.



Mary Rose Puthiyamadam, MD

"The Vow"
Phelps Family Medicine Residency



Hugh Silk, MD

"I Believe in Mentorship"
Community Healthlink;
University of Massachusetts
Medical School



John Romano, MSIV

"A Little Trust"
University of Massachusetts
Medical School



Henry Del Rosario, MD
Best Overall Visual Arts

"Workers of Worcester"
UMass Memorial Health
University of Massachusetts /
Department of Family Medicine



Rebecca Collins, DO, MPH, FFAFP, CPE
Best Photo

"Waiting for Mom to see the doctor"
Phelps Family Medicine Residency



Andrew Kwok, MSII
Best Painting

"A Beautiful Mind"
(poem and painting)
Albany Medical College



William Smucker, MD
Best Video

"Summa Health Family Medicine
Center - Complex Care"

2021 FMEC Visual Arts Award

The goal of the Visual Arts Award process is two-fold: One, to honor the creative talents of Family Physicians (the renaissance men and women of medicine), and Two, to take the best of the submissions and generate materials that can be used to make Family Medicine more visible to colleagues, students, patients and policy makers. Faculty and clinicians, residents-in-training, and medical students in the northeast region of the US are eligible to participate.

Award Winners

2021 FMEC Creative Writing Awards

We invite submissions of written materials that derive from the experience of teaching/learning or practicing Family Medicine. Faculty, clinicians and medical students in the Northeast Region of the U.S. are eligible to participate. Stories, poems, and other forms of fiction or non-fiction writing are welcomed.



Pratiti Roy, MSIV
Best Student Prose
"Raising the Brightness"
Penn State University College
of Medicine / University Park
Regional Campus



Katharine C. Barnard MD
Second Place Poetry
"Portraits In Dignity"
UMass Family Medicine Residency



Maureen Litchman MD
First Place Prose
"The Perfect Match"
The Wright Center for Graduate
Medical Education



Charlotte Walmsley, BS
Best Student Prose
"Being Useful"
University of Massachusetts
Medical School



Carla Jardim MD
First Place Poetry
"The Garden"
Hunterdon Medical Center

*Thank you to our
Award Sponsors*

UPMC
LIFE CHANGING MEDICINE



UPMC
Altoona Family Physicians

Preconference Programming

**Thursday,
October
7**

12:00 pm – 5:00 pm
Benedum

ALSO Instructor Course
Stephen Ratcliffe MD, MSPH and Multiple Faculty

1:00 pm – 5:00 pm
Virtual Zoom Webinar

Integrative Health Implementation Track
Wayne Jonas MD

**Friday,
October
8**

8:00 am – 12:45 pm
Benedum

The FMEC IMPLICIT Network (closed working meeting)
Stephen Ratcliffe MD, MSPH, Maha Shafqa

8:00 am – 5:00 pm
Grand Ballroom

FMEC Healthcare Innovators Network
Multiple Presenters
*Live-streamed - Zoom Link available in Core-apps
see page 17 for agenda*

**Sunday,
October
10**

9:00 am – 12:00 pm
Smithfield

The FMEC IMPLICIT Network (closed working meeting)
Stephen Ratcliffe MD, MSPH, Maha Shafqa

*Thursday's Integrative Health
Implementation Track
sponsored by*



Healthcare Innovators Network Agenda

Friday, October 8, 2021

8:00 am – 5:00 pm

Grand Ballroom and **Live-streamed**

Program Schedule

A zoom link will be placed in Core-apps for this event.

There is no CME credit associated with this event

8:00 am	Welcome and Introductions – Appreciative Inquiry – Identifying Problems vs Embracing/Testing Solutions Laurence Bauer, MSW, MEd
8:15 am	ChenMed (Update) Plans for Growth Daniel McCarter, MD, FAAFP, Faisal Syed, MD
8:45 am	The FMEC Integrative Health Learning Community : Progress Report Wayne Jonas, MD
9:15 am	Risk Stratification: Why It's Important and What It takes to Make it Happen Scott Conard, MD, DABFP, FAAFM, DABHM
9:45 am	Allegheny County Schools Health Insurance Consortium: A Success Story Michael Garagalo, Doug McCausland, David Wyatt
10:15 am	Break
10:30 am	Ashtabula, OH – A Community Owned Health Plan - Virtual Bryce Heinbaugh, MBA and James Lambros, MD
11:00 am	Rosen Hotels and Resorts: Conscious Capitalism is Alive and Well - Virtual Ashley Bacot, Kenneth Aldridge
11:30 am	Could A Documentary Help Transform Our Health Care Systems - Virtual David Chase
Noon – 1:00	Lunch and Group Discussion
1:30 pm	The Role of Primary Care in Affordable Housing - Virtual J. Pat Tokarz, MD, Kendrick Johnson, DO
2:00 pm	Culturally Sensitive Strategies for Weight Loss Gotham Rao, MD
2:30 pm	Lifestyle Medicine and My New Practice Joseph Scherger, MD, MPH
3:15 pm	Break
3:30 pm	Disease Reversal: Here's How I Do It? Alan Chip Teel, MD
4:00 pm	Financial Investment to Build Health Care Facilities In Underserved Communities - Virtual Len Fromer, MD
4:30 pm	Group Discussion
5:00 pm	Program Concludes

Additional Meetings and Events

<i>Thursday, October 7</i> Innovation	1:00 pm – 5:00 pm	FMEC Board Meeting
<i>Thursday, October 7</i> Commonwealth 2	6:00 pm – 7:00 pm	2021 Host and Planning Committee Meeting
<i>Thursday, October 7</i> Innovation	7:00 pm – 9:00 pm	IMPLICIT Working Dinner Meeting
<i>Thursday, October 7</i> Sterlings 1 and 2	7:00 pm – 9:00 pm	Private Event Christine Alexander-Rager, MD Dinner
<i>Friday, October 8</i> Innovation	8:45 pm – 9:45 pm	Private Event Meet the Board of Trustees
<i>Saturday, October 9</i> Benedum	7:00 am – 8:00 am	PAFP Program Director Assembly Breakfast Meeting Ms. Molly Talley
<i>Saturday, October 9</i> Brigade	8:45 pm – 9:45 pm	New York State AFP Reception Scott Hartman MD, Jiana Menendez, MD
<i>Sunday, November 3</i> Innovation	12:15 pm – 1:15 pm	2021 Host Committee Wrap-Up Meeting

Schedule at a Glance

Friday, October 8

8:00 am - 8:30 pm	All Day Registration
10:00 am - 3:00 pm	Residency Fair Set-up
12:45 pm - 1:00 pm	Opening Comments
1:00 pm - 4:30 pm	Academic Presentations
3:00 pm - 5:30 pm	Exhibitor Booth Hours
3:15 pm - 3:30 pm	Afternoon Break
4:30 pm - 5:15 pm	Meet the Exhibitors and Coffee Refresh
5:30 pm	Awards and Plenary Speakers
6:30 pm	Dinner followed by Residency Fair

Friday, October 8

Friday's Plenary sponsor

UPMC
LIFE CHANGING MEDICINE

Friday's breaks are sponsored by:



Residency Fair Dessert sponsored by



Friday 10:00 am – 8:30 pm **All Day Registration** Faculty & Student Registration

Friday 10:00 am – 1:00 pm **Residency Fair Set-Up**
Kings Garden

Friday 12:00 pm – 1:00 pm **Exhibitor Booth Set-Up**
Grand Ballroom Foyer

Friday 12:45 pm – 1:00 pm **Opening Comments**
Grand Ballroom

Friday 1:00 pm – 3:15 pm **WORKSHOPS**

W01 (R) (PTSIP)
Commonwealth I
**Preparing To Succeed In Practice
Current and Emerging Models of Practice**
Ken Rictor MD, Andrew Lobl MD, Daniel McCarter MD, Krista L. Cooke MD

How to Find and Evaluate an Employment Opportunity
Tammy Bonowitz, Scott Waters, Dave D’Urso, Daniel Bobbit,
Molly Talley

W02
Grand Ballroom
Healthcare Innovators Network (continued from Friday morning preconference)
see agenda on page 17

W03
Birmingham
Diversity Equity & Inclusion (DEI) Milestones: A Roadmap for Residency Programs
Fadya El Rayess MD, MPH, Leon McCrea MD, MPH, Suki Tepperberg MD, MPH,
Paul Ravenna MD

W04
Smithfield
**Extending the Reach of Family Physicians: Developing a Community-Based Lifestyle
Medicine Health Promotion Program**
Valentina Sedlacek BA, Julie Burgett BS, MPS MD Candidate 2023, Donald Beckstead MD

W05
Duquesne
Getting Started in Medical Writing: Tips From AFP Editors
Sumi Sexton MD, FAAFP, Jennifer Middleton MD, MPH, FAAFP, Corey Fogleman MD, FAAFP

Friday 1:00 pm – 2:00 pm **SEMINARS**

S01 (OSTEO)
Commonwealth 2
**Osteopathic
Considerations: Working at Home**
Larry Nolan DO, Dana Maxwell DO

S02 (MCH)
Brigade
Using the Menstrual Cycle Chart as a Diagnostic Tool
Maryellen Schroeder MD, MPH

S03
King’s Terrace
**When My Crazy Idea Met My Attending: The Journey From Concept to
Manuscript for Learners in a Large FM Academic Institution**
Michael Partin MD, Sarah Ramirez MD, Jessica Poulson, Jessica Parascando MPH

- S04**
Rivers
Bridging the Gap in Adolescent Sexual Education
Anastasia Pintur MD
- S05**
Ft. Pitt
Increasing the Reach and Impact of Premedical Programs through Partnership with the Office of Diversity
David Richard MD, Andrew Lutzkanin MD, Dennis Gingrich MD, Sonnya Nieves
- S06**
Liberty
Skin Spots in Short Time Slots: An Interactive FM Dermatology Curriculum
Shawna Koprucki MD, Lisa Weiss MD
- S07 (R)**
King's Plaza
What a Pain?! Shoulder Exam and Differential Diagnosis
Xavier Douglas MD, Hillary Mount MD

Friday 1:00 pm – 2:00 pm **LECTURE DISCUSSIONS – Group #1 (20 Minutes Each)**
Sterlings 1

- LD01**
An Evidence-Based and Efficient Approach to Pre-Op Assessments
Allison Watts MD
- LD02**
Acute Kidney Injury
Ebaad Malick MD, Muhammad Khan MD

Friday 1:00 pm – 2:00 pm **LECTURE DISCUSSION – Group #2 (20 Minutes Each)**
Sterlings 2

- LD03**
Engaging a Multidisciplinary Team to Incorporate Evidence-Based Screenings and Surveillance for Pediatric Patients in a Family Medicine Residency Program
Maria Gioia DO, Janelle Johns CRNP
- LD04**
A Longitudinal Curriculum Approach for Sports Medicine Training within a Family Medicine Residency Program
Lee Mancini MD, Virginia Van Duyne MD, Nicholas Martin MD, Maegan Pollard MD, Laurel Banach MD

Friday 1:00 pm – 2:00 pm **RESEARCH PRESENTATIONS #1 (30 Minutes Each)**
Sterlings 3

- RP01 (MCH)**
Fourth Trimester Care: Bridging the Maternity Care Disparity Gap, Creating Change, and Preventing Preterm Birth and Maternal Complications Post-Partum
Rowena D. Pingul-Ravano MD, FAAFP, Margaret Judge RN, BSN, LCCE, CLC, Cassandra Wang
- RP02 (MCH)**
“May The Fourth Be With You!” Fourth Trimester Care: Pilot Study on Early Post-Partum Screening with the AWHONN POST-BIRTH Initiative
Rowena D. Pingul-Ravano MD, Margaret Judge RN, BSN, LCCE, CLC

Friday 2:15 pm – 3:15 pm

SEMINARS

S08 (OSTEO)

Commonwealth 2

A Pain in the Neck: Teaching the Cervical Spine Exam and Differential Diagnosis

Susan Fidler MD, Matthew Rubin DO

S09 (MCH)

Brigade
Collaboration

4th Trimester Care Innovations: Implementation Strategies of The IMPLICIT Network Model

Stacy Bartlett MD, Lisa Schlar MD, Sukanya Srinivasan MD, MPH,
Elizabeth Anderson MD, FFAFP, DipABLM, Mario DeMarco MD, MPH

(MCH)

4th Trimester Care: Implementation of Dyad Scheduling to Increase Early Postpartum Visits

Brianna Moyer MD, Corey Fogleman MD, Jessica Magdeburger MD

S10

Innovation

Considering the Future of Family Medicine and Our Relations to Our Patients

Lewis Mehl-Madrona MD, PhD, Barbara Mainguy MA, MSW,
Patrick McFarlane LCSW, PMH-NP, FNP

S11 (R)

Rivers

Know Thy Inhalers! A Workshop to Improve Care for Patients with COPD and Asthma

Hemalatha Senthilkumar MD, Bode Adebambo MD, Dominique Monteleone

S12

Ft. Pitt

How to Use Zoom Technology Comprehensively: Breaking Out of the Chat Box

Gretchen Shelesky MD, MS, FFAFP

S13

Liberty

Care of the Older Adult in an Acute Rehab Setting

Charmaine Chan DO

S39 (NM/FA)

Benedum

The Place of the Life Story in Family Medicine

Barbara Mainguy MA, MSW, Lewis Mehl-Madrona MD, PhD,
Patrick McFarlane LCSW, PMH-NP, FNP

Friday 2:15 pm – 3:15 pm

LECTURE DISCUSSION – GROUP # 3 (20 Minutes Each)

Sterlings 1

LD05

A History of Reproductive Rights in the US From a Legal and Ethical Perspective and a Practical Application to Adolescent Reproductive Healthcare

Olga Prokunina BS

LD06

A Racial Justice and Health Equity Curriculum for the McKeesport Family Medicine Residency Program

Esha Khurana MD MPH, Hillary Goldstein MD MPH, Ranjani Natarajan MD MEd

LD07

Licensed to Treat, Expected to Lead: The Importance of Family Medicine Leadership Development for the US Healthcare System

Daniel McCarter MD, FFAFP, Faisal Syed MD

Friday 2:15 pm – 3:15 pm

LECTURE DISCUSSION – GROUP #4 (20 Minutes Each)

Sterlings 2

LD08

Adapting a Clinic Using Medications for Opioid Use Disorder in Response to the COVID-19 Pandemic

Cara McAnaney MD, AAHIVS, Shay Gonzales LSW, Barbara Nightingale MD, FAAFP

LD09

Alcohol Screening and Brief Intervention : How Can We Do This in a Family Medicine Clinic

Hemalatha Senthilkumar MD, Antoinette Abou Haidar MD

LD10

Beyond MAT: Developing Partnerships for Drug and Alcohol Treatment

Martin Johns MD, Timothy Fullerton DO

Friday 2:15 pm – 3:15 pm

RESEARCH PRESENTATIONS #2 (30 Minutes Each)

Sterlings 3

RP03

Screening and Managing Diabetes with Telemedicine During COVID-19: Can It Compete with Office Quality Metrics Post-Pandemic?

Derek Baughman MD, Areeba Zain MD, Abdul Waheed MD

RP04

Residency Response to The COVID-19 Pandemic to Optimize Patient Care and Resident Education

Nguyet-Cam Lam MD, Martha Metzgar DO, Courtney Humphrey MD, Judy Abu-Brown MD, Bronson Shetayh MD

Friday 3:15 pm – 3:30 pm

BREAK

Grand Ballroom Foyer Area

Friday 3:30 pm – 4:30 pm

SEMINARS

S14

Grand Ballroom

**Healthcare Innovators Network
(continued from Friday morning preconference)**

see agenda on page 17

S15 (OSTEO)

Commonwealth 2

Prime Rib Review

Scott Brown DO, Alissa Cohen DO, Jessica Goddard DO

S16 (MCH)

Brigade

Innovations in Reproductive Health During COVID-19

Linda Prine MD, Mayra Hernandez Schulte MD, Chelsea Brown Faso MD



- (S) Student Focused
- (R) Resident Focused
- (IM) Integrative Medicine
- (LM) Lifestyle Medicine
- (MCH) Maternal Child Health
- (OSTEO) Osteopathic Medicine
- (PTSIP) Preparing To Succeed In Practice
- (PRO) Procedures
- (NM/FA) Narrative Medicine/Fine Arts

Friday 3:30 pm – 4:30 pm

SEMINARS *continued*

S17 (PTSIP) (R)

Commonwealth 1

Preparing To Succeed In Practice

Moving from Student Loan Indebtedness to Financial Success

James Hemphill, CFP, CIMA, CPWA, Joy Sorensen Navarre, BA

S19

Rivers

COVID-19 Clerkship Innovation: A Tale of Two Schools

Alyssa Anderson MD, Amanda Kolb MD, Martha Seagrave RN, PA-C, Amy Hoffman

S21

Collaboration
Liberty

Addressing Struggling Learners

Kathryn McKenna MD, MPH, Donna Cohen MD, MSc, Stacey Nickoloff DO,
Manasa Irwin MD, Robert Sukolsky MA

S22

King's Plaza

If It's Worth It...Let Me Order It: High and Low Value Care

Andrew Lutzkanin MD

S23

Charters

How to Teach Use of Point-of-Care Medical Apps

Joshua Steinberg MD

S24

Traders

Uncovering Maladaptive Grief Reactions Subsequent to a Reproductive Loss: Implications for the Primary Care Provider

Kathryn Grauerholz MSN, ANP-C, ACHPN

S25

Innovation

Cultural Sensitivity, Implicit Bias and Addiction

Nicole Defenbaugh PhD, Gregory Dobash MD, FAAFP

S42 (NM/FA)

Benedum

Narrative Medicine: Keeping Ourselves and Our Learners Engaged in Clinical Practice

Andre Lijoi MD, CAQ-Ger

Friday 3:30 pm – 4:30 pm

RESEARCH PRESENTATIONS #3 (30 Minutes Each)

Sterlings 3

RP05

A Quality Improvement Initiative to Increase HPV Vaccination Rate in Urban and Rural Family Medicine Residency Practices

Mobeena Arif MD

RP06

Alcohol-Use Disorders in an Inpatient Medical Setting: Predictors of Health Service Utilization and Identification of Clinically Relevant Subgroups

Monica Bal MD

Friday 3:30 pm – 4:30 pm

Sterlings 1

LECTURE DISCUSSION GROUP #5 (20 Minutes Each)

LD11 (NM/FA)

Bringing Arts and Humanities into a Family Medicine Residency

Lewis Mehl-Madrona MD, PhD, Patrick McFarlane LCSW, PMH-NP, FNP,

LD12 (LM)

Bringing Lifestyle Medicine to Life: Developing and Utilizing Lifestyle Medicine Patient

Jessica Goddard DO, Lindsay Nakaishi MD, MPH, DipABLM

LD13

Bringing the Garden to Us: Screening for Food Insecurity and Connecting the Office to the Farm

Katherine Holmes MD, Mark Makar MD, Rehan Azeem MD, Thushari Pathirajamudali MD, Suganya Mahinthan MD

Friday 3:30 pm – 4:30 pm

Sterlings 2

LECTURE DISCUSSION GROUP #6 (20 Minutes Each)

LD14

Care of the Older Transgender Patient

Michelle Caster MD, MPH, Lauren Snyder DO, George Matar MD

Friday 4:30 pm – 5:15 pm

Grand Ballroom Foyer Area

MEET THE EXHIBITORS AND COFFEE REFRESH BREAK

Friday 5:30 pm

Grand Ballroom

AWARDS

Power To Change Our World

Introduced by Pamela Vnenchak MD

This We Believe Award #1

Introduced by Raj Woolever MD, FAAFP

Grand Ballroom

PLENARY PRESENTATION

The Business Community and the Social Determinants of Health: Partnerships Waiting to Happen

Douglas McCausland, PRSBA, Mr. Michael Garofalo, Mr. David L. Wyatt of Allegheny County Schools Health Insurance Consortium, Mr. Ashley Bacot of Harris Hotels and Resorts and ProvInsure, Inc.

Introduced by Amy Crawford - Faucher MD

Friday 6:30 pm

Grand Ballroom and Kings Garden

DINNER FOLLOWED BY RESIDENCY FAIR

Schedule at a Glance

Saturday, October 9

7:00 am – 8:00 am	Breakfast Scholarly Round Table Discussions
8:00 am – 8:30 am	Awards
8:30 am – 9:30 am	Plenary Speakers
9:30 am – 6:00 pm	Exhibitor Booth Hours
9:45 am – 12:00 pm	Academic Presentations
12:00 pm - 1:00 pm	Poster Presentation Session #1
1:00 pm – 2:00 pm	Lunch and Faculty-Student Discussion Tables
2:15 pm – 3:15 pm	Poster Presentation Session #2
3:15 pm – 4:15 pm	Academic Presentations
4:15 pm – 4:30 pm	Afternoon Break
4:30 pm – 6:00 pm	Academic Presentations
6:00 pm	Dinner followed by Residency Fair
9:00 pm	Residency Fair Booth Breakdown

*Saturday Morning Break
sponsored by*



*Saturday Afternoon Break
sponsored by*



*Residency Fair Dessert
sponsored by*



Atlantic Health System

Saturday 7:00 am – 8:00 am Breakfast Scholarly Round Table Discussions

Grand Ballroom *See Complete List of Tables on Page 53*

Saturday 8:00 am ORIENTATION AND AWARDS

Grand Ballroom
Emerging Leaders Awards
Introduced by Susan Kaye MD
Creative Writing Awards
Introduced by Paul R. Gross MD.
This We Believe Award #2
Introduced by Raj Woolever MD, FAAFP
Mid-Career Faculty Achievement Award
Introduced by Leon McCrea II MD, MPH

Saturday 8:30 am PLENARY PRESENTATION

Grand Ballroom
Creating Equity for the Underserved, the Homeless and Communities Impacted by Trauma in Pittsburgh, PA
 James Withers MD, Rev. Paul Abernathy, Elizabeth Miller MD PhD, F SAHM, and a representative from the Manchester Bidwell Corporation
Introduced by Tracey Conti MD

Saturday 9:30 am BREAK

Grand Ballroom Foyer Area

Saturday 9:45 am – 12:00 pm WORKSHOPS

W06 (PRO)
 Birmingham
 Collaboration
Injection Junction: All Aboard and Common Joint Injections for Medical Students and Residents
 Robert Zukas DO, John Spitalne DO, Matthew Resciniti DO, George Maxted MD

W07
 Innovation
The Promise and Challenge of Reflective Writing
 Paul Gross MD, Jonathan Han MD

W08
 Benedum
Sometimes It IS All Fun and Games
 Gretchen Shelesky MD, MS, FAAFP Greg Castelli PharmD, Yufei Ge MD, Connor McKittrick MD, Linda Hogan PhD

W09
 King's Terrace
Wellbeing: The Most Important Thing We Model and Teach: A Train the Trainer Workshop to Advance Wellbeing Curriculum for Medical Students and Residents
 Catherine Pipas MD, MPH, Kaushal Nanavati MD, Chaya Prasad MD, MBA, Nicky Beaudoin MEd, Jeffrey S. Levy MD

W10 (PRO)
 Smithfield
Male Neonatal Circumcision
 Michaela Lei DO, Cindy Barter MD, Arif Hafeez DO

W19 (IM)
 Rivers
Reinvigorating the Biopsychosocial Model: The Role of Lifestyle and Integrative Medicine in the Care of Patients and Communities
 Joseph Scherger MD MPH, Wayne Jonas MD, Catherine Feaga MD, Goutham Rao MD

Saturday, October 9



Saturday 9:45 am – 10:45 am SEMINARS

- S26 (OSTEO)**
Commonwealth 2

The Resident Evaluation: Bridging Milestones, EPAs and OPP to Evaluate Clinical Competency
Sara Baig MD, Michaela Ortiz DO
- S27 (R) (PTSIP)**
Commonwealth 1

Self-Care for Student Loans During Challenging Times
Joy Sorensen Navarre BA
- S28 (S)**
Duquesne

Interview for Success: Helpful Tips for the Interview Trail
Karl Clebak MD MHA, Roland Newman DO, Jason Croad DO, Julie Radico PhD
- S29**
Kings Plaza

Introduction to the Basics of Hepatitis C Management and Tools to Develop Your Own Hepatitis C Treatment Team
Sanketh Proddatur MD, Renee Philson MD, Kayley Swope MD, Marianne Koenig PharmD
- S30**
Commonwealth 1

Testosterone Therapy: An Evidence Based Approach For Testosterone Deficiencies
Thomas Phillips MD
- S31**
Liberty
Collaboration

Obesity Medicine in Primary Care
Gregory Dobash MD, FAAFP

Saturday 9:45 am – 10:45 am RESEARCH PRESENTATIONS #4 (30 Minutes Each)
Sterlings 3

- RP07 (MCH)**

Early Maternal Intervention in the 4th Trimester: Effects on Breastfeeding, Postpartum Depression, and Birth Planning
Rachel Bian MD,
Lauren Cowen MD,
Alexandria Snow MD,
Amundam Mancho,
Scott Hartman MD
- RP08 (MCH)**

Interconception Care in an Academic Pediatric Clinic Setting
Sarah Jones MD

(S) Student Focused
 (R) Resident Focused
 (IM) Integrative Medicine
 (LM) Lifestyle Medicine
 (MCH) Maternal Child Health
 (OSTEO) Osteopathic Medicine
 (PTSIP) Preparing To Succeed In Practice
 (PRO) Procedures
 (NM/FA) Narrative Medicine/Fine Arts

Saturday 9:45 am – 10:45 am LECTURE DISCUSSION GROUP #7 (20 Minutes Each)

Sterlings 1

LD17 Click Where? Teaching Telemedicine-Naïve Interns How to Effectively Have Telemedicine Encounters

Zachary Kosak MD, Lindsay Nakaishi MD, MPH, DipABLM

LD18 Enhanced Behavioral Health Care During Primary Care Visits

Larry Nolan DO, Gabrielle Houser APRN CNP, Bethany Bogantz APRN CNP, Corey Becker APRN CNP, Cheryl Bourne APRN CNP

LD19 Centering Pregnancy on Zoom in the Setting of a Pandemic

Lauren Middleton MD, MPH, Mark Bornstein MD, Mindy Brittner MD

Saturday 9:45 am – 10:45 am LECTURE DISCUSSION GROUP #8 (20 Minutes Each)

Sterlings 2

LD20 COVID Vaccine? No Thanks

Lauren Middleton MD, MPH, Mindy Brittner MD

LD21 COVID-19 Associated Diabetes: A New Challenge for Family Medicine Physicians

Cristina Marti-Amarista MD

LD22 Corona Challenges

Mary Puthiyamadam MD

Saturday 11:00 am – 12:00 pm SEMINARS

S34 (OSTEO) OMM for Acute and Chronic Pain

Commonwealth 2 Meera Shah DO

S35 (PTSIP) (R) Preparing to Succeed: Moving from Student Loan Indebtedness to Financial Success

Commonwealth 1 James Hemphill, CFP, CIMA, CPWA, Joy Sorensen Navarre, BA, Christine Alexander-Rager MD

S36 The Changing Landscape of Recruitment – Where Do We Go from Here?

Duquesne Donald R. Woolever MD, FAAFP, Jackie Weaver-Agostoni DO, MPH, DipABLM, FACOFP

S37 The Juggling Act: Women, Medicine, and Families

Commonwealth 1 Christine Alexander-Rager MD, Amy Crawford-Faucher MD, Stacy Potts MD

S38 The Key Elements of Academic Medicine and How We ALL Can be Successful

Ft. Pitt Joyce Robert MD

S40 Table Rounds: A Novel Teaching Tool for Medical Educators (New Title)

King's Plaza Paulius Mui MD, Christina Falcone MS, Phoebe Ashley MD, Stephanie Call MD

S41 (LM) Let Food Be Thy Medicine: Implementing Culinary Medicine Curricula

Liberty Kelsey Sicker MD

Saturday 11:00 am – 12:00 pm RESEARCH PRESENTATIONS #5 (30 Minutes Each)

Sterlings 3

RP09

Improving Adult Immunization Rates in Ethnic and Racial Minorities

Gregory Dobash MD, FAAFP

RP10

Harmonizing Male and Female Human Papillomavirus Vaccination Rates in a Family Medicine Residency Practice Quality Improvement Project

Gregory Castelli PharmD, Ann McGaffey MD, Donald Middleton MD, Danielle Ware MD, Chyongchiou Lin PhD, MS

Saturday 11:00 am – 12:00 pm LECTURE DISCUSSION GROUP #9 (20 Minutes Each)

Sterlings 1

LD23

Evaluating the Effectiveness of a Simulation-Based Obstetrical Curriculum for First Year Family Medicine Residents

Rachel Bian MD, Courtney Kodweis DO, Sarah Minney MD, Dawn Pruett MD

LD24

Evidenced-Based Perioperative Cardiovascular Risk Assessment for Noncardiac Surgery

Cristina Marti-Amarista MD, Mayur Rali MD, Abigail Hamilton MD

LD25

Fertility and Family Building Options for Transgender Patients

Lauren Snyder DO, Michelle Caster MD, George Matar MD, Maria Fam MD

Saturday 11:00 am – 12:00 pm LECTURE DISCUSSION GROUP #10 (20 Minutes Each)

Sterlings 2

LD26

HEAT-Ed Discussions

Melanie Wathugala MD, Taylin Im MD, Maryam Robinson MD, MPH, Cortney Crespo MD

LD27

Implementing the Comprehensive Opioid and Pain Management Curriculum in Ohio's Medical Schools: A Qualitative Study

Stacey Gardner-Buckshaw PhD, MPA, Elizabeth Beverly PhD, John Boltri MD, FAAFP, Rebecca Fischbein PhD

LD28 (MCH)

Improving Black Maternal Morbidity and Mortality Thorough Initial Prenatal Appointment Education and Resources

Amira Najjar MD, Ashley Cremona-Simmons DO, MS, Tiffany Corbean MD

Saturday 11:00 am – 12:00 pm **SPEED PRESENTATIONS GROUP #1 (5 Minutes Each)**

Chartiers

SP01

Who Are We Missing in Breast Cancer Screening?

Emily Baumert MD, Amy Feng MD, Minakshi Shukla MBBS, Olasumbo Awoniyi MD, Terry Seetoe Aaron Chaise MD

SP02

Love Thyself

Renata Carneiro PhD, Manuel Puente MD

SP03

A Nutrition Curriculum to Improve Physicians' Ability to Counsel Patients in Non-Medication-Based Maintenance of Chronic Medical Conditions

Aleksandra Dukhan DO, Victoria McCarthy DO, Timothy O'Herron MD, Joseph Tribuna MD

SP04

Along a River in the Wilds: A Podcast

Rhianna Hibbler BS

SP05

Do You Want to Present at a Family Medicine Conference?

Linda Hogan PhD, Alexandria Taylor

Saturday 12:00 pm – 1:00 pm **POSTER PRESENTATION SESSION #1**

Grand Ballroom and Kings Garden *(See Pages 54-57 for complete Poster Presentation List)*

Saturday 1:00 pm – 2:00 pm **LUNCH**

Grand Ballroom

Saturday 2:15 pm – 3:15 pm **POSTER PRESENTATION SESSION #2**

Grand Ballroom and Kings Garden *(See Pages 58-61 for complete Poster Presentation List)*

Saturday 3:15 pm – 6:00 pm

WORKSHOPS

W11 (S) (R)

Benedum

Collaborators Café

Leon McCrea MD, MPH, FAAFP, Katherine Wagner MD

W12

Smithfield

Introduction to Trauma-Informed Care

Stephanie Mischell MD, Jiana Menendez, Roya Yavari

W13

Commonwealth 1

POCUS FOCUS: Practice Common Exams and Discover How to Bring Point-of-Care Ultrasound to your Residency Program

Marisa Bartley DO, William Hawkes MD, Alan Finkelstein MD

W14

Innovation

Responding to the Primary Care Workforce Challenge

Stacy Potts MD et al

W15

Rivers

Seeing, Reading, Listening - Incorporating Medical Humanities into Family Medicine Core Sessions

Hugh Silk MD, William Miller MD, Nicole Defenbaugh PhD

Saturday 3:15 pm – 4:15 pm

SEMINARS

S43 (OSTEO)

Commonwealth 2

Osteopathic Approach to Common Pediatric Conditions

Michaela Lei DO, Arif Hafeez DO

S46

Liberty
Collaboration

On-Demand PreEP

Mark Bornstein DO, InSung Min MD

Pre-Exposure Prophylaxis for Prevention of HIV Acquisition Among Adolescents

George Matar MD, Lauren Snyder DO, Michelle Caster MD

S47

Ft. Pitt

Leading Leaders

Yufei Ge MD, Gretchen Shelesky MD, MS, FAAFP

S48 (S) (R)

King's Terrace

Setting the Agenda: For that Satisfying Clinical Experience

Abbie Jacobs MD, Sylvia Mwanzia MD

S49

Board Room

Emerging and New Family Medicine Residency Programs

Raj Woolever MD, FAAFP I

S50 (IM)

Traders

Evidence-Based Integrative Medicine (IM) In Women's Health: Complementing our Current Practice

Chava Cogan MD, MEd, Krishna Desai MD, Mary Warren MD

S68 (PTSIP) (R)

Duquesne

Current and Emerging Models of Practice

Joseph Scherger MD, MPH, Wayne Jonas MD, Daniel McCarter MD

Saturday 3:15 pm – 4:15 pm RESEARCH PRESENTATION #6 (30 Minutes Each)

Sterlings 3

RP11

Optimization of Heart Failure Management in the Ambulatory Care Setting

Neda Danniell MBA MD, Ryan Flick MD, Xinyi Ge MD, Daniel Lan MD, Mary Lasher DO

RP12

The Importance of a Nutrition Curriculum in a Family Medicine Residency Program

Aleksandra Dukhan DO, Victoria McCarthy DO, Tim O’Herron MD, Joseph Tribuna MD, Judy Washington MD

Saturday 3:15 pm – 4:15 pm LECTURE DISCUSSION GROUP #11 (20 Minutes Each)

Sterlings 1

LD29

Improving Rates of Breast and Colon Cancer Screening As Part of the Medical Student Clerkship Experience

Tracey Roesing MD

LD30

Irregular Cycles in Young Women: Differentiating and Treating Hypothalamic Amenorrhea and Polycystic Ovarian Syndrome

Summer Mason Holmes MD

Saturday 3:15 pm – 4:15 pm LECTURE DISCUSSION GROUP #12 (20 Minutes Each)

Sterlings 2

LD31

Lessons Learned in Telemedicine for MAT During the COVID-19 Pandemic

Jennifer Lee MD, Laura Kurash MD, Navid Roder MD

LD32 (LM)

Lifestyle Matters: An Interdisciplinary Approach to Lifestyle Medicine Education Lifestyle Medicine

Andrew Goodbred MD, Hapreet Mahal MD, Michael Abgott MD

LD33

Linking EPAs to the Milestones: Enriching Application Formative Feedback

Megan Mendez Miller DO, Anthony Dambro MD, Jennifer Grana DO

Saturday 4:15 pm – 4:30 pm BREAK

Grand Ballroom Foyer Area

Saturday 4:30 pm – 6:00 pm

SEMINARS

S51 (OSTEO)

Commonwealth 2

Low Back Pain

Kathleen Sweeney DO, FAAFP

S52

Brigade
Collaboration

Building a Medication for Addiction Treatment Program with Buprenorphine into your Residency-Based Practice

Navid Roder MD, Monica Gupta MD, Pooja Monpara MD

Integrating Medicine (Buprenorphine) for Opioid Use Disorder (MOUD) into in Family Medicine Residency Training and Residency Clinics

Janice Anderson MD, Robert McHugh MD

S53 (S)

Duquesne

Developing New Models of Healthcare in the Covid Pandemic: A View from the Street

Michael Seidman MD, Christine Alexander MD, Katie Davis MSN, RN, PHNA-BC, Rahul Shenoy MD, Leanne Chrisman MD

S54

King's Plaza
Collaboration

Incorporating Reproductive Health into Telemedicine Visits

Rithika Mathias MD, Payal Patel MD, Marji Gold MD, Zoey Thill MD, MPH

Telemedication Abortion in COVID-19 Pandemic

Deyang Nyandak MD, Stephanie Mischell MD

S67

Duquesne

Leadership Skills for Medical Students: How to Make A Difference

Ashley Bentley MBA CAE, Alex Crockett, Cody Clinker, Keshia McAfee

Saturday 4:30 pm – 5:30 pm

RESEARCH PRESENTATIONS #7 (30 Minutes Each)

Sterlings 3

RP13

Using fRAP: A Mixed Method Geospatial Mapping and Rapid Qualitative Analysis Approach, to Uncover Barriers and Facilitators of Diabetes Care in the Lehigh Valley

Autumn Kieber-Emmons MD, MPH, Kyle Shaak MPH, Melanie Johnson MPA, Susan Hansen MA, Elaine Banerjee MD, MPH

RP14

Building a Computer Simulation Model to Predict the Progression or Improvement of Cognitive Impairment

Lewis Mehl-Madrona MD, PhD, Barbara Mainguy MA, MSW, David Ruben MD, MBA

Saturday 4:30 pm – 5:30 pm

RESEARCH PRESENTATIONS #8 (30 Minutes Each)

Sterlings 1

RP15

Increasing Advance Directive Discussions in Family Medicine Residency Clinic

Katherine Liang MD, Amy Horwitz DO, Jessica Tomazic MD, Ling-Ling Lee MD, Molly McDermott DO, Brian Youseff MD, PhD, Anna McLaughlin MD

RP16

Impact of Clinical Pharmacist Integration Within The Interprofessional Primary Care Team On Polypharmacy

Livia McCutcheon PharmD; M.A. Instructional Design, Nguyet-Cam Lam MD, MS, Emily Rothermel MD Candidate, Courtney Humphrey MD, Alycia Walty MD

Saturday 4:30 pm – 5:30 pm PAPER SESSIONS (15 Minutes each)

Paper Group 1:

Birmingham

Paper01

Cracking the Code: How to Recognize a Future Family Medicine Physician

Hillary Mount MD, Tessa Keiser, Halimat Olaniyan, Jackie Knapke, Sandra Regan

Paper02

A Kick in the OSCE

Jessica Handel DO, FAAFP, Jennifer Lamanna PhD, Laura Miller MD MPH, Ronald Scott MD, Rudolph Krafft MD, FAAFP

Paper03

Graduating with Zoom

Vikram Arora MD, MPH, FAAFP, Stephen Hagberg MD, Lindsay Heiple DO

Paper04

Impact of Virtual Interviews on Recruitment of Underrepresented in Medicine Physicians

Ana Tovar PhD Psychology, Eboselumhen Iseghohi MD

Paper Group #2:

Liberty

Paper05

Impact of an Online Elective on Women's Health and Family Planning

Rachel Zielinski DO, Medical Student, Kellie Wo MD, Robert Motley MD Marguerite Duane MD, MHA, FAAFP

Paper06

Improving Medication Reconciliation in Ambulatory Setting

Roma Balbin Uy DO, Lydia Lee MD, Jaividhya Dasarathy MD

Paper07

Use of Mental Health Taskforce to Enhance Outpatient Crisis Management

Renata Carneiro PhD, Rehab Tabchi DO

Paper08

Children's Chronic Health Conditions and Their Families' Unmet Social Needs: An Ecological Study

Maral Sakayan MS, Jessica Saunders MPA, Jonathan Thackeray MD, John Pascoe MD, MPH

Saturday 4:30 pm – 5:30 pm PAPER SESSIONS (15 Minutes each) *continued*

Paper Group #3:

Ft. Pitt

Paper09

Lower Back Problems and Leg Cramps: Are They Related?

Jihad Irani MD, MPH, Stephanie Arnold

Paper10

Population Health Analysis of ED Super-Users at a Family Medicine Residency Practice

Carly Chamberlain DO, Ashley Panichelli MD

Paper12

Staying Up All Night? Comparing Resident Wellness and Perceptions of Patient Care on Night Float vs 24 Hour Call

LaToya Smith MD, Hillary Mount MD

Saturday 4:30 pm – 5:30 pm CLINICAL SUCCESS STORY

Sterlings 2

CSS01

The Warm Handoff

Gregory Dobash MD, FAAFP

CSS02

Hindsight 2020, Reflections Along the Way : What I Have Learned and Strive to Be

Monika Kusuma Pringle MD

Saturday 6:00 pm DINNER FOLLOWED BY RESIDENCY FAIR

Grand Ballroom
and Kings Garden

Schedule at a Glance

Sunday, October 10

7:00 am – 8:00 am	Breakfast
7:00 am – 8:00 am	FMEC Member Meeting
8:00 am – 9:15 am	Plenary Speakers
9:30 am – 12:00 pm	Academic Presentations
10:30 am – 10:45 am	Morning Break
12:00 pm	Conference Concludes
12:15 pm	2021 Host Committee Wrap-Up Meeting

Sunday 7:00 am – 8:00 am **BREAKFAST**
Grand Ballroom

Sunday 7:00 am – 8:00 am **FMEC ALL MEMBER MEETING**
Innovation

Sunday 8:00 am **This We Believe Award #3**
Grand Ballroom *Introduced by Raj Woolever MD, FAAFP*

Sunday 8:30 am **PLENARY PRESENTATION**
Grand Ballroom **Coming Together in Action for Equity, Diversity, and Inclusion: One Department's Way**
Andrea Westby MD, C.J. Peek PhD; Michele Allen MD, MS; James T. Pacala MD, MS; Wendy Nickerson
Introduced by Christine Alexander-Rager MD

Sunday 9:30 am – 12:00 pm **WORKSHOPS**

W16 **Create the Complete Package: Steps to Take for the Residency Match**
King's Garden 1 Janelle Von Bargen PhD, LMSW, Melissa Arthur PhD, LCSW-R, BFEF


W17 **RURAL HEALTH**
King's Garden 3 Gregory Dobash MD, FAAFP, Amanda Vaglia DO

W18 **Shaping GME the Future of Family Medicine: Updates on the ACGME FM Requirements Major Revisions**
Benedum Stacy Potts MD, MEd

Sunday 9:30 am – 10:30 am **SEMINARS**

S56 **Using Cooking Matters Programming to Improve Health Outcomes in a Primary Care Setting**
King's Garden 4 Megan Zaworski DO,
Gary Duncan MD,
Allison Gase DO, Rachel Moyer,
Holly Russell MD MS,
Margaret Liljedahl

S57 (S) (R) (PRO) **Splinting Techniques for Acute Wrist Injuries**
King's Garden 5 Rabin Chandran MD,
Katharina de Klerk DO,
Kelly Ciapciak DO,
Laura Hoeg MD



TRACKS

- (S) Student Focused
- (R) Resident Focused
- (IM) Integrative Medicine
- (LM) Lifestyle Medicine
- (MCH) Maternal Child Health
- (OSTEO) Osteopathic Medicine
- (PTSIP) Preparing To Succeed In Practice
- (PRO) Procedures
- (NM/FA) Narrative Medicine/Fine Arts

S60
Liberty

Save the Baby Teeth: Meeting Current Guidelines on Early Childhood Caries Prevention

Abigail Lowther MD, MS, Kristi Augustine MD, Zachary Smith MD, MHA, Valerie Niedermier MD

S61
Rivers

Uncommon Management in Transgender Medical Management

Steven Wolfe DO, MPH, FAAFP, AAHIVS

S62
Ft. Pitt

Environmental Racism

Catherine Feaga DO

Sunday 9:30 am – 10:30 am

RESEARCH PRESENTATIONS #9 (30 Minutes Each)

Sterlings 3

RP17

Putting It All Together: FMOBOMT...What?

Jessica Peek DO

RP18

Prescribing Thrive Boxes

Sukanya Srinivasan MD, MPH

Sunday 9:30 – 10:30 am

LECTURE DISCUSSION GROUP #13 (20 Minutes Each)

Sterlings 1

LD34 (MCH)

Quality Improvement in the 4th Trimester: Identifying and Referring Patients for Earlier Postpartum Care

Alanna Ticali MD

Sunday 9:30 – 10:30 am

LECTURE DISCUSSION – GROUP #14 (20 Minutes Each)

Sterlings 2

LD35

Wilderness Medicine: Bites, Stings, and Envenomation

Gregory Dobash MD, FAAFP, Daniel Plavin MD

LD36

Feedback Thursdays: An Initiative to Increase Feedback Given in the Outpatient Clinic

Kathryn McKenna MD, MPH, Michael Loeven MD

LD37

Virtual Shadowing: So Easy, Anyone Can Do It!

Andrew Lutzkanin MD, David Richard MD

Sunday 10:30 am – 10:45 am

BREAK

Grand Ballroom Foyer Area

Sunday 10:45 am – 12:00 pm

SEMINARS

S63

Brigade

The Long and Short of Long COVID

Emily Baumert MD, Alla Akivis MD

S64

Duquesne

The Ongoing Implementation of Research Domain Criteria to Teaching Family Medicine Residents Psychopharmacology

Lewis Mehl-Madrona MD, PhD, Barbara Mainguy MA, MSW,
Patrick McFarlane LCSW, PMH-NP, FNP, Josie Conte DO

S65

Liberty

Screening & Management of Physical Activity in Pediatric Obese Patients

Karmela Dalisay MD

S66

Rivers

The Role of Family Physicians in Environmental Justice and Public Health

Catherine Feaga, DO

Sunday 10:45 am – 12:00 pm

LECTURE DISCUSSION GROUP #15 (20 Minutes Each)

Sterlings 1

LD38

Nocturnal Enuresis in Children

Hemalatha Senthilkumar MD

LD39

Treatment of Hepatitis C in Resident Primary Care Clinic

Emilie Leroy MD, Deborah Pinto MD

LD40

Incorporating Hepatitis C Treatment in the Residency Office: Yes We Can!

Jocelyn Young DO, MSc, Suganya Mahinthan

Sunday 10:45 am – 12:00 pm

LECTURE DISCUSSION GROUP #16 (20 Minutes Each)

Sterlings 2

LD41

Tips for Directors and Chief Residents Regarding Residents and Self-Care for Their Student Loans

Joy Sorensen Navarre BA

LD42

Telemedicine: It Should Be Here to Stay

Jeanne Spencer MD, Richard Kutz PsyD

LD43

The Overdose Surge Bus: A Model of Community Outreach and Linkage to Primary Based Care

Margaret Lowenstein MD, Monica Gupta MD, Silvana Mazzella

Sunday 10:45 am – 12:00 pm **RESEARCH PRESENTATIONS #10 (30 Minutes Each)**

Sterlings 3

RP19

Reduced No-Show Rates and Sustained Patient Satisfaction of Telehealth During the COVID-19 Pandemic

Joseph Wiedemer BS, MS, Brenden Drerup BS, Jennifer Espenschied BS,

RP20

Home Blood Pressure Monitoring to Improve Patient Use of Telemedicine

Antoinette Wilson MMS, PA-C, Barbara Nightingale MD, Sukanya Srinivasan MD

Sunday 10:45 am – 12:00 pm **SPEED PRESENTATIONS GROUP #2 (5 Minutes Each)**

Innovation

SP06

Improving Medical Students' Confidence and Knowledge on Shoulder and Knee Joint Injection Using an Injection Workshop

Sumira Koirala MD, FAAFP

SP08

The 7 Habits of Highly Effective Learners

Roger Musa MD

SP09

Cultivating Resilience From the Start

Ann Rutter MD, Kate Wagner MD, Joanne Dannenhoffer MD

SP10

Qualitative Pilot Study Looking Into Beliefs and Attitudes Concerning "Non-Indicated" Labor Induction

Asna Tasleem MD

Sunday 12:15 pm – 1:15 pm **2021 Host Committee Wrap-Up Meeting**

Innovation



Penn Medicine
Lancaster General Health

LIVE YOUR LEGACY



Family Medicine Opportunities

Lancaster General Health Physicians is a physician-led, professionally managed network of more than 350 primary-care and specialty physicians and 200-plus advanced-practice providers. We serve patients at locations throughout the region. Our teams take pride in offering the highest quality of care through comprehensive services and advanced technologies—always maintaining a focus on wellness and prevention.

JOIN OUR FAMILY MEDICINE FACULTY TEAM!

- Spend 60% of your time with residents and 40% with your own patient panel
- Current program has 39 residents
- Diverse patient population including 40% Spanish speaking
- Ranked #1 overall Family Medicine Residency by Doximity
- Affiliation with Penn Medicine Lancaster General Health, one of the leading providers of complex specialty care
- Patient-centered medical home model
- Active population health program
- Systemwide Epic EMR

Family medicine provider opportunities also available.

Culture

We integrate practices and policies that encourage diverse perspectives, experiences and cultures by showing an appreciation for the differences in ethnicity, gender, age, national origin, religion, education, disability, and sexual orientation in our workforce. We celebrate the diversity of our community, strive to have our physicians reflect the diversity of our patients and community, work to reduce health disparities and eliminate social injustices.

Community

Lancaster is conveniently located within relatively close proximity to several major east coast cities including: Philadelphia, PA, Baltimore, MD, Washington, DC, and New York, NY.

Comprehensive Benefits Package

- Competitive base salary
- Comprehensive health insurance
- Paid professional liability insurance
- Paid days off (vacation, holiday, sick, personal)
- Continuing education
- Optional dental and vision plans
- Retirement plans including 403(b)



CONTACT:

Steven Capo, Physician Recruiter
Steven.Capo@pennmedicine.upenn.edu
(717) 544-4010

For more information on our system and community, please visit LancasterDoctors.org



U.S. News Best Hospitals 2020-21
#4 in Pennsylvania
#1 in Lancaster



Magnet recognition



Foster G. McGaw Prize for Excellence in Community Service

Penn Medicine Lancaster General Health is a remarkable place to serve. One where we encourage all employees to Live Their Legacy through the passion of their work, a commitment to serve and a strong desire to be their best.

LIVE YOUR PASSION. LIVE YOUR BEST. LIVE YOUR COMMITMENT

Equal Opportunity Employer

2021 President Level
Partner

UPPMC

LIFE CHANGING MEDICINE

PRESIDENT LEVEL

UPMC Life Changing Medicine

PLATINUM LEVEL

Allegheny Health Network (AHN)/Highmark
Atlantic Health System
Duquesne University School of Osteopathic Medicine
MedStar Health
Meritus Health
MetroHealth Medical Center
St. Luke's University Health Network
UPMC Altoona Family Medicine Residency

GOLD LEVEL

Christiana Care Health System Family Medicine & Emergency Medicine /Family Medicine Residency Program
Greater Lawrence Family Health Center
Icahn School of Medicine at Mount Sinai Department of Family Medicine and Community Health
Jamaica Hospital Medical Center
Penn Medicine / Lancaster General Health
St. Clair Hospital
Summa Health Akron Family Medicine Residency Program
University of Massachusetts Department of Family Medicine and Community Health

SILVER LEVEL

American University of the Caribbean School of Medicine
Middlesex Family Medicine
Montefiore Medical Center/Albert Einstein College of Medicine-Department of Family & Social Medicine
St. George's University School of Medicine
St. Matthews University School of Medicine

BRONZE I

Albany Medical College Department of Family and Community Medicine
Boston Medical Center Department of Family Medicine
Drexel Department of Family, Community, & Preventive Medicine
New York Institute of Technology College of Osteopathic Medicine (NYITCOM)
Northeast Ohio Medical University (NEOMED)
Sidney Kimmel Medical College of Thomas Jefferson University
SUNY Downstate Medical Center
University of Cincinnati Department of Family and Community Medicine
Virginia Commonwealth University

BRONZE II

Abington Family Medicine Residency Program
Central Maine Medical Center Family Medicine Residency
Cleveland Clinic/Fairview Hospital
Conemaugh Memorial Medical Center Family Medicine Residency
Crozer-Keystone Family Medicine Residency Program
Eastern Maine Medical Center Family Medicine Residency
Heritage Valley Family Medicine Residency Program
Hunterdon Family Medicine Residency Program
Indiana Regional Medical Center
Maine-Dartmouth Family Medicine Residency
McLaren St. Luke's Family Medicine Residency
Penn Highlands Healthcare
University of Vermont Health Network - Champlain Valley Physicians Hospital Family Medicine Residency
UPMC Altoona FMRP
UPMC McKeesport Family Medicine Residency Program
UPMC Shadyside Family Medicine Residency Program
UPMC Williamsport Family Medicine Residency

Location: Grand Ballroom Foyer

Organization	City State
3RNET	Jefferson City, MO
ACOFP Education and Research Foundation	Arlington Heights, IL
Allegheny Health Network Primary Care	Pittsburgh, PA
Altus Assessments	Toronto, ON
CaseNetwork	Newtown Square, PA
ChenMed	Miami Gardens, FL
Defense Health Agency Civilian Medical Corps	Ft. Sam, Houston, TX
Proposed Duquesne University College of Osteopathic Medicine (Proposed)	Pittsburgh, PA
Navigate Student Loans	Saint Paul, MN
Penn Medicine Lancaster General Health	Lancaster, PA
St. Luke's University Health Network - Family Medicine	Bethlehem, PA
St. Matthews University School of Medicine	Orlando, FL
TriageMD	Radnor, PA
UPMC Central PA	Harrisburg, PA
WellSpan Health	York, PA

Gold Partners



Silver Partners

Geisinger

***“We believe Family Medicine
is critical to improving the
health of the nation.”***

FAMILY MEDICINE
EDUCATION CONSORTIUM, INC.



2022 FMEC Annual Meeting

September 16th - 18th



Crystal City
Arlington, VA

Hyatt Regency Crystal City
2799 Richmond Highway
Arlington, VA 22202



Have a career. Have a life.

LIFEPOINT
HEALTH[®]

LifePoint Health offers unique opportunities for providers to prosper professionally and personally at 89 hospital campuses nationwide. Quality care is our top priority – we give you access to the tools, resources, and support you need to help you care for your patients and grow your business. In addition, we offer competitive compensation packages, which may include a sign-on bonus, student loan reimbursement, and residency stipends.

Join us in Making Communities Healthier.[®]

For more information, visit LifePointHealth.net

Submit your CV for consideration to LPNT_Provider.Recruitment@lpnt.net

We are an equal opportunity employer. All qualified applicants will receive consideration for employment without regard to race, color, religion, sex, sexual orientation, gender identity, national origin, disability or veteran status.

Residency Fair Participants*

*As of September 15, 2021

Booth	Residency Program Name	Residency Director	City/State
1	University of CT School of Medicine Family Medicine Residency Program	Kenia Mansilla-Rivera MD	Hartford CT
2	Bayhealth FMRP	Brintha Vasagar MD, MPH, FAAFP	Dover DE
3	Christiana Care Health System Family Medicine & Emergency Medicine /Family Medicine Residency Program	Erin Kavanaugh MD	Wilmington DE
4	Saint Francis Family Medicine Residency Program	Robert Monteleone MD	Wilmington DE
5	Boston Medical Center Department of Family Medicine	Suki Tepperberg MD	Boston MA
6	Tufts University Family Medicine Residency Cambridge Health Alliance	Caitlin D'Agata MD	Malden MA
7	University of Massachusetts Fitchburg Family Medicine Residency Program	Beth Mazyck MD	Fitchburg MA
8	University of Massachusetts Worcester Family Medicine Residency Program	Ginny Van Duyne MD	Worcester MA
9	Meritus Family Medicine Residency Program	Paul Quesenberry MD	Hagerstown MD
10	Maine-Dartmouth Family Medicine Residency	Raj Woolever MD	Augusta ME
11	Northern Light Eastern Maine Medical Center Family Medicine Residency	Sarah Irving MD	Bangor ME
12	Hunterdon Family Medicine Residency Program	Patricia Kroth DO	Flemington NJ
13	Overlook Medical Center Family Medicine Residency	Joseph Tribuna MD	Summit NJ
14	Rutgers RWJMS at CentraState Medical Center	Maria Ciminelli MD, FAAFP	Freehold NJ
15	St. Luke's University Health Network - Family Medicine - Warren Campus	Nandhini Veeraraghavan MD	Phillipsburg NJ
16	Harlem Residency in Family Medicine	Lucia McLendon MD	New York NY
17	Icahn School of Medicine at Mount Sinai Downtown Residency in Urban Family Medicine	Robert Schiller MD	New York NY
18	Icahn School of Medicine at Mount Sinai South Nassau Family Medicine Residency Program	Samuel Sandowski MD	Oceanside NY
19	Jamaica Hospital Medical Center	Gina Basello DO	Jamaica NY
20	Mid-Hudson Family Practice Residency - IFH	Megan McMullan MD	Kingston NY
21	Montefiore Medical Center/Einstein COM-Dept of Family & Social Medicine	Joel Bumol MD	Bronx NY
22	Phelps Family Medicine Residency Program	Rebecca Collins DO, MPH, FAAFP, CPE	Sleepy Hollow NY

Residency Fair Participants*

*As of September 15, 2021

Booth	Residency Program Name	Residency Director	City/State
23	St. Joseph's Hospital Health Center Family Medicine Residency	James Tucker MD	Syracuse NY
24	SUNY Downstate Health Sciences University Program	Eve Faber MD	Brooklyn NY
25	SUNY Upstate Family Medicine Residency Program	R. Eugene Bailey MD	Syracuse NY
26	United Health Services/Wilson Family Medicine Residency Program	Daniel Young MD	Johnson City NY
27	United Memorial Medical Center	Elizabeth Loomis MD	Batavia NY
28	University at Buffalo Dept of Family Medicine Residency Program	Jennifer Corliss MD	Buffalo NY
29	University of Rochester/ Highland Family Medicine Residency Program	Stephen Schultz MD	Rochester NY
30	Kettering Health Network/Soin Family Medicine	James Tytko MD	Beavercreek OH
31	Memorial Health System-Family Medicine Program	Roxanne Cech MD	Belpre OH
32	Mercy Health St. Elizabeth Boardman Hospital Family Medicine Residency	Thomas Macabobby MD, FAAFP	Boardman OH
33	Mercy Health St. Elizabeth Youngstown Family Medicine Residency	Jessica Handel DO	Youngstown OH
34	Mercy Health-St. Rita's Medical Center Family Medicine Residency	Lisa Casey DO	Lima OH
35	Riverside Methodist Hospital Family Medicine Residency (OhioHealth)	Stephen Auciello MD	Columbus OH
36	Summa Barberton Family Practice Residency Program	Lisa Schroeder MD	Barberton OH
37	The MetroHealth System/Case Western Reserve University	Amber Whited-Watson DO	Cleveland OH
38	Abington Family Medicine Residency Program	John Russell MD	Jenkintown PA
39	Allegheny Health Network - Forbes Family Medicine Residency Program	Stacey Nickoloff DO	Monroeville PA
40	Crozer Health Family Medicine Residency Program	William Warning MD	Springfield PA
41	DLP/Conemaugh Memorial Medical Center	Jeanne Spencer MD	Johnstown PA
42	Drexel University College of Medicine/Tower Health	Brent Simmons MD	Philadelphia PA
43	Einstein Montgomery Family Medicine Residency Program	Angela Nicholas MD	Norristown PA
44	Heritage Valley Family Medicine Residency Program	Stephen Hagberg MD	Beaver Falls PA
45	IRMC Rural Family Medicine	Amanda Vaglia DO	Indiana PA
46	Lehigh Valley Health Network Family Medicine Residency	Veronica Brohm DO	Allentown PA

Residency Fair Participants*

*As of September 15, 2021

Booth	Residency Program Name	Residency Director	City/State
47	Meadville Medical Center Family Medicine Residency	Kristy Netkovicz DO	Meadville PA
48	Penn Highlands Healthcare	Brooke Kunselman Program Mgr.	Du Bois PA
49	Penn Medicine Lancaster General Health Family Medicine Residency	Pamela Vnenchak MD	Lancaster PA
50	Penn State Health St. Joseph Family and Community Medicine	Alexis Reedy-Cooper MD, MPH	Reading PA
51	Penn State Milton S. Hershey Medical Center/Hershey Program	Karl T. Clebak MD, MHA, FAAFP	Hershey PA
52	Reading Hospital/Tower Health	John Sheffield MD	West Reading PA
53	Saint Vincent Family Medicine Residency Program	Caitlin Clark DO	Erie PA
54	St. Luke's University Health Network - Family Medicine - Anderson Campus	Michael Abgott MD	Easton PA
55	St. Luke's University Health Network - Family Medicine - Bethlehem Campus	Nguyet-Cam Lam MD	Bethlehem PA
56	St. Luke's University Health Network - Family Medicine - Miners Campus	Thomas McGinley MD	Coaldale PA
57	St. Luke's University Health Network - Family Medicine - Sacred Heart Campus	Renata Carneiro PhD	Allentown PA
58	Temple Family Medicine Residency Program	Menachem Leasy MD	Philadelphia PA
59	Thomas Jefferson University Family Medicine	Marc Altshuler MD	Philadelphia PA
60	UPMC Altoona Family Medicine Residency Program	Donald Beckstead MD	Altoona PA
61	UPMC Horizon Family Medicine Residency Program	Martin Johns MD	Farrell PA
62	UPMC McKeesport Family Medicine Residency Program	Tracey Conti MD	McKeesport PA
63	UPMC Shadyside Family Medicine Residency Program	Jacqueline Weaver-Agostoni DO, MPH, DipABLM, FACOFP	Pittsburgh PA
64	UPMC St. Margaret Family Medicine Residency Program	Jonathan Han MD	Pittsburgh PA
65	UPMC Williamsport Family Medicine Residency	Jeffrey Verzella MD	Williamsport PA
66	Washington Health System Family Medicine Residency Program	Lauren O'Brien MD	Washington PA
67	WellSpan Good Samaritan Hospital Family Medicine Residency Program	Abdul Waheed MD, MS PHS, FAAFP	Lebanon PA
68	Wellspan York Hospital Family Medicine Residency	Stacey Robert MD	York PA
69	Brown Family Medicine Residency	Fadya El Rayess MD, MPH	Pawtucket RI

Breakfast Scholarly Table Discussions

Saturday, October 9th
7:00 am – 8:00 am
Grand Ballroom

Table Number	Topic
Table #1	Osteopathic Recognition in 2021 and Beyond Scott Brown DO
Table #2	ACGME Survey Fatigue Alysia Herzog MD
Table #3	Best Practices in Early Career Financial Decision Making James Hemphill, CFP CIMA, CPWA
Table #4	Lessons From My First Project as a Practitioner Researcher Donald Pine MD
Table #5	For Residency Programs That Offer FM Clerkships: How to Develop a Didactic Curriculum Dedicated for Medical Students Only Quynh Chu MD, Lindsay Heiple DO
Table #6	Addiction Medicine Gregory Dobash MD, FAAFP
Table #7	Does Early Palliative Care Intervention Improve Clinical Outcomes and Quality of Life in Chronically Ill Patients? Matthew Flaherty MD, Jansen Mallari MD
Table #8	Interprofessional Engagement for Medical Student Training at a Student Run Free Clinic Stacey Gardner-Buckshaw PhD, MPA, John Boltri MD, FAAFP
Table #9	Menstrual Cup and Menstrual Stigma Discussion Cindy Jiao
Table #10	Who You Gonna Call?: A Novel Telehealth Curriculum for Family Medicine Residents in the COVID-19 Era Michael Partin MD, Megan Mendez-Miller DO, Paul Hong
Table #11	Expanding Options in Women's Health and Family Planning Maryellen Schroeder MD, MPH, Rachel Zielinski Medical Student
Table #12	Promoting Patients' Sense of Dignity Kayley Swope MD, Elizabeth Mohan MD, Leah Nash MD, Heather Sakely PharmD
Table #13	Reduced No-Show Rates and Sustained Patient Satisfaction of Telehealth During the COVID-19 Pandemic Joseph Wiedemer MS, Brenden Drerup BS, Jennifer Espenschied BS, Lisa Hamiltom MD
Table #14	Ensuring Patients Have a Voice: How To Facilitate Patient Voting In Your Hospital Advocacy Henrique Jaime MD, Carly Chamberlain DO, Diana Wohler MD
Table #16	Value-Based Care: Restoring the Doctor-Patient Relationship Daniel McCarter MD, Faisal Syed MD
Table #17	FMIG Leaders (Students and Faculty) Alex Crockett, Cody Clinker, AAFP staff



Addiction and Pain Management

- Poster01** **Impact of Brief Instructional Intervention on Medical Provider E-Referrals for Smoking Cessation**
Mary Ellen Wilson MD, Curtis Bone MD, MHS, Susan Veldheer Ded
- Poster02** **Medication-Assisted Withdrawal and Alcohol Use Disorder Treatment in the Ambulatory Setting: A Survey of Primary Care Providers**
Jacob Weiss BA
- Poster03** **Using a Controlled Substance Safety Committee and reporting MMEs in Family Medicine in response to CDC Opioid Guidelines**
Jefferson Hunter MSII
- Poster04** **Creation of An Opioid Use Disorder (OUD) Curriculum at a Regional Medical School Campus**
Amy Hoffman BA, Madeline Snyder BS, Pratiti Roy BS, Kyuseok (Peter) Im BS
- Poster05** **Primary Care Implementation of MAT for Opioid Use Disorder in Northeast Ohio**
Poojajeet Khaira BS, Stacey Gardner-Buckshaw PhD, Adam Perzynski PhD
- Poster06** **Which Demographic Factors Correlate With Receiving a Prescription Stimulant?: A Cross-Sectional Cohort Study**
Shannon Brumbaugh BS, Curtis Bone MD MHS, Wen-Jan Tuan DHA, MPH, MS
- Poster07** **How We Developed Addiction Medicine Curriculum & Medication Assisted Treatment Clinic in Our Suburban-Rural Residency Program**
Quynh Chu MD

Care of Children

- Poster08** **Pediatric Vaccine Adherence in an Underserved Population**
Zoe Karavolis PharmD
- Poster09** **Just a Little Shot: Improvement of Pediatric Flu Vaccination Rates**
Megan Sanborn MD, Megan Mendez Miller DO, Hannah Dodge DO, Erin Jones DO, John Cugini DO
- Poster10** **Coordination of Care for Children with Autism Spectrum Disorder at an Urban Primary Care Pediatric Practice**
Joseph Laseter BA, Andrea Matthew MD, Shanna Kralovic DO, Rebecca Hazen PhD, Marie Clark MD, MPH

*Poster setup starts at 10:00 am
Posters must be removed from
board no later than 1:30 pm*



Poster Presentations Session I (Posters I-20)

Saturday, October 9th

12:00 pm – 1:00 pm

Grand Ballroom and Kings Garden

Clinical Care

Poster11

Reducing CHF-Related Admissions Through an Integrated Practice Unit Approach: Evaluating a Regional Heart Failure Program in Central Pennsylvania using the RE-AIM Framework of Implementation

Muhammad Chaudhary MD, Mobeena Arif MD, Derek Baughman MD, Muhammad Khan MD, Adul Waheed MD

Poster12

Optimization of Heart Failure Management in the Ambulatory Care Setting

Neda Danniell MD, MBA, Ryan Flick MD, Xinyi Ge MD, Daniel Lan MD, Mary Lasher DO

Poster13

Implementing a Choosing Wisely Approach in Family Medicine Clinics

Noor Kawmi BA

Poster14

Implementation of a Dietitian Screening Protocol at a Student-Run Free Clinic

Emily Marsico BS, Anna Cherian, Alicia Bond MD

Diversity, Equity and Inclusion

Poster15

Going Beyond the Numbers: Diversity and Residency Recruitment

Cathy Richards DO, Brittany Baptiste MD, Judy Washington MD, Christina Johnson MD, PhD

Virtual and Telemedicine

Poster16

Incorporating Virtual Rooming into a Family Medicine Residency Clinic

Winfred Frazier MD, MPH, FAAFP, Benjamin Carnahan MD, Sanketh Proddutur MD

Poster17

Teddy Bear Hospital Day During the COVID-19 Pandemic: Creating a Hospital in the Virtual World

Ariana Adamski BS, Yuxin Ouyang BS, MS, Mason Lee BS, Theresa Weinman BA, Katherine Wagner MD

Poster18

Experiences of Connecticut Community Health Center Providers with Telemedicine during the COVID-19 Pandemic

Roberta Delvy BS BA, Emil Coman PhD, Kelly Sanchez MPH, Thomas Agresta MD MBI

Poster19

The Virtual Patient Meets the Virtual Medical Student: Telemedicine in the Age of COVID-19 and its Impact on Medical Student Perceptions

Maral Sakayan MS BS, Cynthia White BS, Timothy Crawford PhD MPH, Kate Conway MD MPH, Frederic Stuart Leeds MD MS

Poster20

Another Piece of the COVID Puzzle- Is it D-Dimer Time Again?

Carolyn Murrer MD MS, Vikram Arora MD MPH FAAFP, Quynh Chu MD,



Saturday, October 9th
12:00 pm – 1:00 pm

Grand Ballroom and Kings Garden

Resident and Medical Student Education and Curriculum Development

- Poster21** **Medical Informatics Curriculum Development for Family Medicine Residents**
Katherine Liang MD, Lauren Wichman MD, Amy Horwitz DO, Jessica Tomazic MD
- Poster22** **Standardized Educational Talks as a Means to Improve Work: Education Ratio on a Large Residency Inpatient Service**
Kyle May MD, Jasen Tjahjadi MD
- Poster23** **The Use of Badge Buddies to Improve Role Clarity within Hospital and Office-based Settings**
Victoria McCarthy DO, MS, Aleksandra Dukhan DO, Brittini Minafra DO, Christina Johnson DO, PhD, Judy Washington MD
- Poster24** **A Novel Game-Based Learning Tool for Fostering a More Effective Transition to the Clinical Phase of Medical School**
Paulius Mui MD, Christina Falcone MS, Phoebe Ashley MD, Stephanie Call MD
- Poster25** **Building a Collaborative Learning Community with Sustained Engagement Through Game-Based Learning**
Paulius Mui MD, Christina Falcone MS, Stephanie Call MD, Phoebe Ashley MD
- Poster26** **Implementation of a Medical Legal Partnership in a Family Medicine Residency Program**
Brooke Babyak MD, Shannon Perkins PhD
- Poster27** **Physician Inbasket Management: A Lean Six Sigma Approach**
Verlaine L. Blaser DO
- Poster28** **MyChart, My Health: Using QI to Promote MyChart Utilization**
Rebecca Bracken BA, Matthew Wagner
- Poster29** **The Use of a Scoping Review as a Tool to Aid Medical Students in Conducting a Literature Review**
Lauren Echols MS, Christian Morris MS, Esther Dell AMLS, Sarah Ramirez MD
- Poster30** **Case-Based Instruction as a Vehicle to Enhance Medical Student Efficacy with Medical Spanish**
Echols Lauren BS, BA, Christian Morris BS, Sarah Ramirez MD
- Poster32** **MovementMed: Enhancing Medical Student Well-being & Knowledge Through Kinesthetic Learning & Community**
Tresne Hernandez BA, Allison Ogawa BA
- Poster33** **Medical Students as Interpreters: A Scoping Review**
Christian Morris BS, Lauren Echols BS, Esther Dell AMLS, Sarah Ramirez MD
- Poster99** **Development of the Master Adaptive Learner in Residency Training**
Soukaina Rezqui, Susan Hansen MA, Nyann Biery MS, Drew Keister MD

Poster setup starts at 10:00 am
Posters must be removed from
board no later than 1:30 pm

Poster Presentations Session I (Posters 21-50 and Poster 99)

Saturday, October 9th
12:00 pm – 1:00 pm
Grand Ballroom and Kings Garden

Maternal Child Health and Obstetrics

- Poster34** (MCH) **Managing Anemia in Pregnancy with Iron Supplementation to Minimize Post-Partum Hemorrhage**
Aleksandra Dukhan DO, Archana Jayakumar DO, Judy Washington MD, Melanie Smith RD
- Poster35** (MCH) **Standardized References to Improve Safety and Quality of Maternal Care: MCH Intern Cards**
Maegan Pollard MD, Kristina Gracey MD, MPH
- Poster36** (MCH) **Introduction to Prenatal Care for the Family Medicine Resident**
Kathleen Fay MD, Lynn Hamrich
- Poster37** (MCH) **Healthier Moms and Babies: Maternal Depression Screening at Well-Child Visits**
Alexandria LaSalla BA MS, Ann Aring MD, FAAFP, Miriam Chan PharmD, CPHQ, CPPS
- Poster38** (MCH) **Screening for Perinatal Depression with IMPLICIT ICC: Are Some Mothers Falling Through The Gaps?**
Jennifer Mihalo MS, Kayla Warren MPH, Lisa Schlar MD
- Poster39** (MCH) **Identification of Uterine Inversion in the Postpartum State**
Meena Gella DO, BS, Nora McGinely-Hence MD, BS, Joseph Hines MD, FAAFP, HMDC, Gamal Saleh MD

Osteopathic Medicine and Procedures

- Poster41** **MS4 Bootcamp: OMT for MD**
Anne Darby DO, Megan Mendez Miller DO, Ashley Koontz DO
- Poster42** **Point-of-Care Ultrasound (POCUS) Use in Direct Primary Care (DPC)**
Paulius Mui MD, David Schwartzman, Christopher Lee, Kenneth Qiu MD
- Poster43** **Hidden Meniscal Tear in Herpes Zoster Presentation**
Shekiba Shahabzada MD, Kushee-Nidhi Kumar
- Poster44** **Hungry Bone Syndrome**
Minakshi Shukla MD, Alla Akivis MD
- Poster45** **Snapping Scapular Syndrome: A Case Report**
Taylor Rider OMS-III, Neha Haque, Daniel Plavin MD
- Poster46** **Primary Care Elective - Improving Clinical Skills During COVID-19**
Aishwarya Prasad, Tori Weinstein, Haider Khalil, Sotirios Raptis, Hope Privitera, Joy Checa MD, MSc, MBA

Nutrition and Wellness

- Poster47** **A Nutrition Curriculum to Improve Physicians' Ability to Counsel Patients in Non-Medication-Based Maintenance of Chronic Medical Conditions**
Aleksandra Dukhan DO, Victoria McCarthy DO, Timothy O'Herron MD, Joseph Tribuna MD
- Poster49** **We Can't Afford to Burn Out: Lessons Learned and Preliminary Positive Results from a Multi-Institutional Online Wellbeing Curriculum for Medical Students and Residents**
Catherine Pipas MD, MPH, Kaushal Nanavati MD, Chaya Prasad MD, MBA, Stuart Grande PhD, MPA, Nicky Beaudoin MEd
- Poster50** **Diet-Associated Microbiome Changes Associated with Colon Cancer**
Austin Hake BS, Jeanine Morelli MD, Raja Jaber MD



Saturday, October 9th
2:15 pm – 3:15 pm

Grand Ballroom and Kings Garden

Underserved Populations

- Poster51** **Implementing Community Outreach: The Influences and Barriers to Community Engagement in an Urban Residency**
Laurianne Haynes MD, Annette Gadegbeku MD
- Poster52** **Increasing the Rate of Support Person Attendance at Primary Care Outpatient Visits**
Matthew Wagner MD
- Poster55** **Coalition-Building Across Sectors to Advance Community Health**
Maria Fowler BS, Madison Hearn BS, Angela Wilkins BS, Kathryn Westcott PhD, Sarah Worley PhD
- Poster56** **Working with Burmese Patients: Understanding Historical and Cultural Contexts to Improve Healthcare Access and Health Status**
Tiffany Wang BS, Alice Stella BS, Harry Zay, Branden Eggen PhD, Hyacinth Mason PhD, MPH, CHES
- Poster57** **Systematic Qualitative Assessment of Social Determinants of Health in a Low-Income Community**
Mira Shenouda BS, Tracey Conti MD
- Poster58** **Educating Batavia Primary Care Patients about the Nature of a Residency Clinic**
Lucas Lebbin OMS-IV, Michael Kozlowski OMS-IV, Jonathan Brach DO
- Poster59** **Bringing Universal Food Insecurity Screening to UPMC Shadyside Family Health Center (SFHC)**
Cassandra Wang BS, Emily Yanoshak BS, Kayla Warren MPH, Alan Finkelstein MD, Lisa Schlar MD
- Poster60** **Red Carpet to Healthy Living: A Hybrid Community Health Fair Model to Safely Deliver Health Education to Rural Communities During the COVID-19 Pandemic**
Caroline Eisele BS, Deniz Siso BS, Amy Zheng BS, Garrett Thompson MPH, Gitanjali Bhushan MS

*Poster setup starts at 1:30 pm
Posters must be removed from
board no later than 3:45 pm*

Poster Presentations Session 2 (Posters 5I-7O)

Saturday, October 9th

2:15 pm – 3:15 pm

Grand Ballroom and Kings Garden

Vaccine and Virus Management

- Poster63** **Unilateral Tension Pneumothorax as a Late Sequela of COVID-19 Pneumonia: A Case Report**
Maria Fam MD, Muhammad Adnan Khan MD, Tamer Said MD
- Poster64** **Increasing Influenza Vaccination Rates During Covid-19 Champions Project**
Janice Baker MD, Jennifer Negron DO, Tyler Holsapple MD, Mary Lare DO, Sarah Levy DO
- Poster65** **Use of Hydroxychloroquine in Hospitalized Patients with COVID-19 Pneumonia: Results of a Retrospective Study in a Community Hospital**
Phi Le DO
- Poster66** **Flu Outreach During the COVID-19 Pandemic**
Pratik Patel MD, John A. DiSabato MD, FAAFP, Katherine Davis MD
- Poster67** **Understanding the Barriers to Flu Vaccination**
Taylor Streaty BA, Casey Callahan MD, Monica Gupta MD, Kristine Garcia MD
- Poster68** **Pneumococcal Vaccination in Individuals with Intellectual and Developmental Disabilities: A Community Education Study**
Rebecca Bracken BA, Rebecca Plow BS
- Poster69** **“Street View” On Vaccine Hesitancy and Resistance in North Philadelphia – Student Vaccine Ambassadors’ Perspective**
Trevor Shenk BA, Jyotsana Dhanawade BS, MS
- Poster70** **Addressing Covid-19 Vaccine Hesitancy within the Illinois Population through Creation of a Covid Communication Toolkit**
Priya Nair BA MS2, Stefanie Demetriades PhD,



Saturday, October 9th
2:15 pm – 3:15 pm

Grand Ballroom and Kings Garden

Elder Care:

- Poster72** **Use of the Patient Dignity Question in a Geriatric Outpatient Setting to Elicit What Matters Most to Older Adults**
Kayley Swope MD, Elizabeth Mohan MD, Leah Nash MD, Heather Sakely PharmD
- Poster73** **Rare Cause of Both Acute Liver and Kidney Failure in a 60 year old**
Roma Balbin Uy DO, Jaividya Dasarathy MD
- Poster74** **Care of Geriatric Patients**
Joanna Choi-Klier BA, Nasiffa Hossain MD

Medicine and the Arts

- Poster75** **Using Storytelling to Decrease Opioid Related Stigma Among Current and Future Medical Providers**
Noorin Damji BA
- Poster76** **Forming a Narrative Medicine Group in Residency**
Jessica Tomazic MD, Lilian White MD, Carl Tyler MD
- Poster77** **Empowering Arts: Linking Creative Arts Expression with Community Engagement to Support the Homeless Population in Albany, NY**
Emily Avis BA, Shivali Gupta BS, MHS, Kaminaka Annette, Andrew Kwok BA

Mental Health

- Poster78** **That is NOT my Son**
Landen Green DO, Elizabeth Imboden MD, FAAP
- Poster79** **Shout it Out**
Zachary Kosak MD, Jessica Goddard DO, Lindsay Nakaishi MD, MPH, DipABLM
- Poster80** **Trauma Queens**
Sonal Agrawal BS, Rina Girish Bhalodi BS, Mame Cisse MD, Renata Carneiro PhD
- Poster81** **Practicality of Extended Leave of Absence of Family Medicine Physicians Experiencing Burnout**
Jake Brock BS
- Poster82** **Burnout and Wellness Quality Improvement Study**
Amy Adik BS, Arjun Pandya
- Poster83** **Ready or Not, Here They Come: The Rise of Family Violence During the Covid-19 Pandemic**
Lindsay Serwatka BS, Renata Carneiro PhD
- Poster84** **Mindfulness Interventions in Primary Care**
Lauren Struck BS, MTS, Martha Seagrave RN PA-C

Poster Presentations Session 2 (Posters 71-98)

Saturday, October 9th

2:15 pm – 3:15 pm

Grand Ballroom and Kings Garden

Other Posters:

- Poster86** **R.I.S.E**
Renata Carneiro PhD, Mahnoor Malik
- Poster87** **Contextual Factors Impacting the Decision to Restrain and the Restraint Trajectory**
Olivia Koury MD, MSc., Quinn Demarest, Sungsil Stacy Cho, Andrew Miele, Elizabeth Brondolo
- Poster88** **Impact on Global Health Partnerships During COVID19 Pandemic**
Shantal Villalobos MD, MSc, Mark Meyer MD
- Poster89** **The Sociobehavioral Impact of COVID-19 in Rural Ohio**
Sanjay Jinka BS, Sanaa Mansoor BS, Matthew Kubina BS, Jay Natarajan BS
- Poster90** **The Impact of Clinical Pharmacist Integration Within The Interprofessional Primary Care Team On Polypharmacy**
Livia McCutcheon MA, PharmD, Nguyet Cam-Lam MD, MS, Courtney Humphrey MD, Emily Rothermel BS, Alycia Walty MD
- Poster91** **The Cost of Preferred Vehicles: Assessing the Out-of-Pocket Cost of Topical Prescriptions by Formulation**
Catherine Smiley BA, Steve Maczuga MS, Joslyn Sciacca Kirby MD, MS, MEd

Reproductive Health and Women's Health

- Poster92** **Screening for Sexually Transmitted Infections in Males**
Ifeolorunbode (Bode) Adebambo MD, Hemalatha Senthilkumar MD, Jamil Khoury MD
- Poster93** **Patient Preferences for Vaginal Self-Swabbing for Vaginal Tract Infections**
Jeffrey Matthews DO, Amy Clouse MD
- Poster94** **Beliefs About the Biological Basis of Virginity**
Sarah Walser BA
- Poster95** **Facilitators and Barriers to Safer Sex and Effective Contraception in Deaf Women: A Mixed Methods Study**
Arielle Schecter BA, Tiffany Panko MD, MBA
- Poster96** **Improving Routine Cervical Cancer Screening Rates at My Community Health Center: A Quality Improvement Proposal**
Michaela Ward BS
- Poster97** **The Amish and Medical Residents' Approaches to Pregnancy**
Ava Dorazio
- Poster98** **Rape Crisis Center Evaluation: Pre- and Mid-Pandemic**
Roshni Wani BS

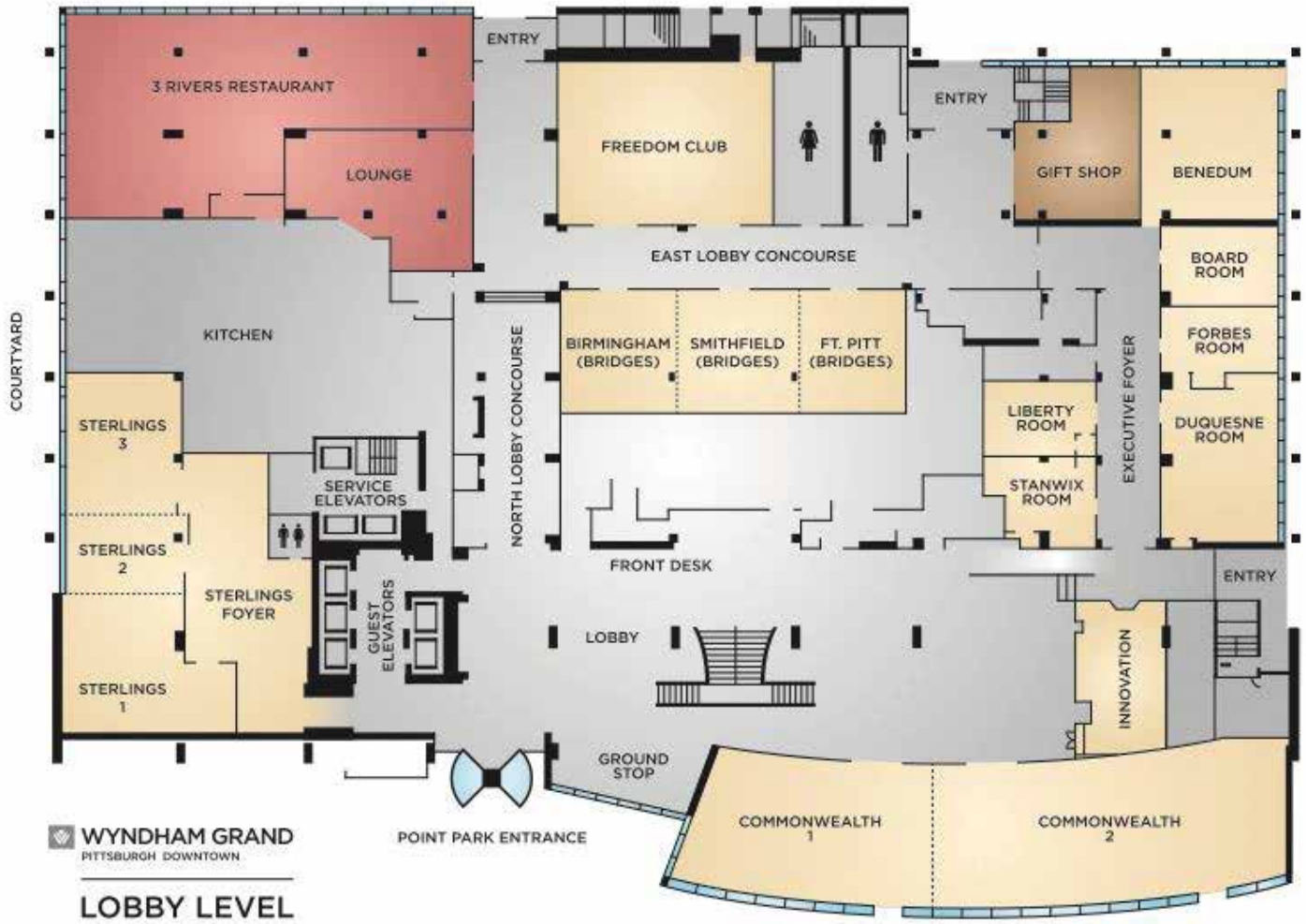
Poster setup starts at 1:30 pm
Posters must be removed from
board no later than 3:45 pm

Wyndham Grand Hotel Maps



WYNDHAM GRAND | **BALLROOM LEVEL**
PITTSBURGH DOWNTOWN

Wyndam Grand Hotel Maps





Family Medicine Education Consortium, Inc.
501 (c)(3) Organization
© Copyright 2020 Family Medicine Education Consortium
Have a question? Please e-mail lisa.schwieterman@fmec.net

