An artistic illustration featuring several hands of different skin tones (tan, brown, yellow, black) reaching towards a central globe. The globe is rendered in shades of blue and white. The background is filled with various colorful patterns, including sunburst designs in orange and yellow, and abstract shapes in red, blue, and white. The overall style is vibrant and multicultural.

Pennsylvania Maternal Health Collaborative: Goals & Objectives

Sarah Inés Ramírez, MD, FAAFP

Associate Professor | Family & Community Medicine | Family Medicine Obstetrics
PA Chapter of the National Hispanic Medical Association, *Founder and President*
Penn State Hispanic Professionals Association, *Founder and President*
Family Medicine Education Consortium Board, *Member*
PA Maternal Health Collaborative, Co-Founder and Member

03/07/25

PA Maternal Health Collaborative Leadership Team

REPRESENTATIVE	ORGANIZATION
Scott Allen	FMEC
Sarah Inés Ramírez	NHMA – PA, Family & Community Medicine at PSH, FMEC
David Saunders, Tensae Gertz, Alexis Kullish, Gabrielle El-Adas	PA DOH Office of Health Equity
Sean McCormick	Latino Connection, Color & Culture
Ashley Walkowiak	Governor’s Commission on Women
Ashleigh Strange	Governor’s Commission on LGBTQ Affairs
Makayla Lagerman	Residency Program Liaison, Department of Family & Community Medicine Residency Program at PSCOM
Sara Goulet	PA Department of Human Service
Giselle Hallden	PA Department of Health and Bureau of Family Health

Members

- 132 people have signed up
- 32 people attended the September meeting
- 36 people attended the December meeting
- 87 people registered for the March meeting

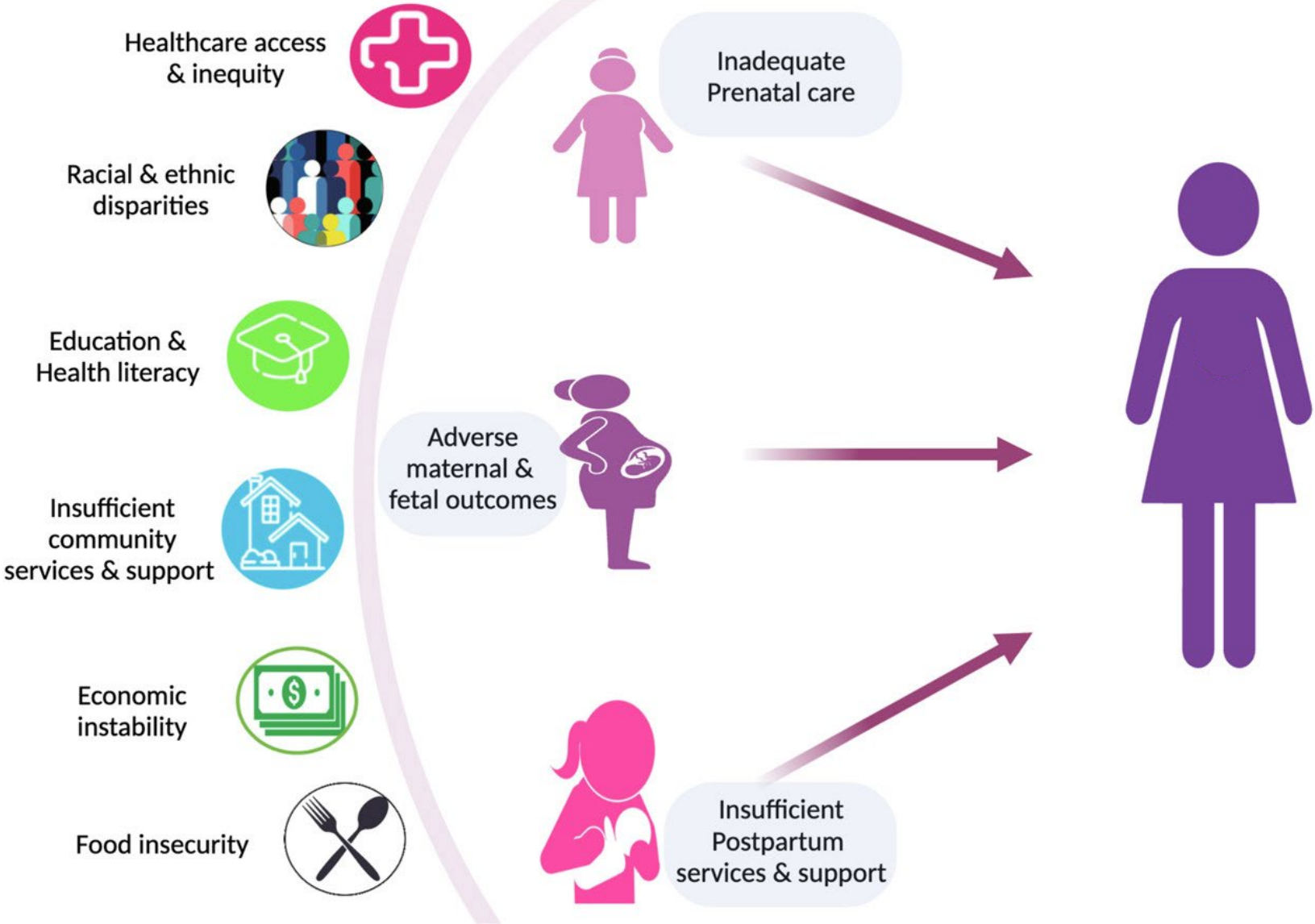
UPMC, Penn State, PA DOH, Philadelphia DOH, Once Upon a Premie, Implicit Network, UPenn, AHA, Health Partners Plan, Jefferson Health Plan, PreciousLY Polished Art Designs Ncoollections, Child Guidance Resource Centers, Temple/Villanova University, Patients R Waiting, St. Lukes, Bowling Business Strategies, Latino Connection, Jewish Healthcare Foundation, Delaware, Geisenger, The Primary Health Network, Delaware County Health Department, Temple University Program for Maternal Health Equity, The Foundation for Delaware County, MVP Recovery, Child Guidance Resource Centers, ChesPenn Health Services, City of York - Bureau of Health, Fox Chase Cancer Center, and more

The **intent** of the Collaborative is not to educate advocates and stakeholders about the state of the problem but rather to **present solutions**.

The overall goals of the Collaborative are to:

- Engage a diverse group of stakeholders (see lists below) particularly those who may remain unconnected to PDOH work in this area but who will find virtual participation and sharing of *solutions*;
- Share information on current activities to address maternal morbidity, health disparities, and SDOHs, including their success and potential for spread and sustainability;
- Develop a strategy for identifying ongoing racist practices within maternity care and ways to mitigate these practices;
- Identify promising and successful models, particularly those which have strong data or the potential to show impact, for spread and sustainability;
- Unite individuals and institutions in advancing such successful efforts, through collaboration or replication, and through new funding; and
- Disseminate findings through scholarship.

Social Determinants of Health and Racism in Medicine Are Drivers of Maternal Morbidity and Mortality



Drivers of Maternal Mortality in PA

Pregnancy-Associated - "a death that is attributable to a condition that is *unaffected* by the pregnancy and occurs within 1 year of the pregnancy."¹

Data (NEW):

1. Mental Health and Substance Use Disorder

Pregnancy-Related - "...the death of a birthing individual while pregnant or within 1 year of the end of a pregnancy regardless of the outcome, duration, or site of the pregnancy from any cause related to or aggravated by the pregnancy or its management, but not from accidental or incidental causes."¹

Data (NEW):

1. Mental Health and Substance Use Disorder
2. Cardiovascular Disease

Alignment of goals for Maternal Health Across PA

SHIP Goal Team 3.4

- Vaccinate newborn at age-appropriate times.
- Improve early and adequate prenatal care visits.
- Increase behavioral health services during prenatal, perinatal, and postnatal care.
- Annually provide breastfeeding education and community and outreach to improve breastfeeding initiation and duration times
- Increase access to prenatal and postnatal care.

Maternal Health Collaborative Group

- Engage a diverse group of stakeholders (see lists below) particularly those who may remain unconnected to PDOH work in this area but who will find virtual participation and sharing of *solutions*.
- Share information on current activities to address maternal morbidity, health disparities, and SDOHs, including their success and potential for spread and sustainability.
- Develop a strategy for identifying ongoing racist practices within maternity care and ways to mitigate these practices.
- Identify promising and successful models, particularly those which have strong data or the potential to show impact, for spread and sustainability.

PA Maternal Health Strategic Planning Team

- Improve detection and treatment of behavioral health and substance use.
- Improve coordination and access to care in rural areas and maternity care deserts.
- Increase access to quality of care.
- Integrate initiatives to address health related social needs.
- Expand and diversify the maternal health workforce

From **discussion** to **action**

How can the Collaborative:

- Amplify the importance of maternal health
 - Nearly 70 unique organizations are represented
- Embrace and advance ideas shared during our meetings
 - Develop a data dashboard focusing on SDOH
 - Strengthen community partnerships to increase health outreach, particularly with maternal health and childcare
 - Empowering residents to take ownership of their health and rights
 - Share the “Maternal Health - Know Your Rights” brochure (PA OAG) as a core tool for empowering residents
 - Stress importance of midwives, transition of care from pediatric to primary care, and lactation support at well visits
- Help enlisted organizations meet their goals and needs
 - Spotlight resources (IMPLICIT, Philly Joy Bank, Myana, HELP:MLP, Once Upon a Premie, etc.)
 - Matching individual/group needs with resources from within the group
 - Request from participant: What strategies are out there to ensure that pregnancy and postpartum medical appointments are made and kept?

Stay tuned!