



Pennsylvania Maternal Health Collaborative


Welcome

Sarah Inés Ramírez, MD, FAAFP

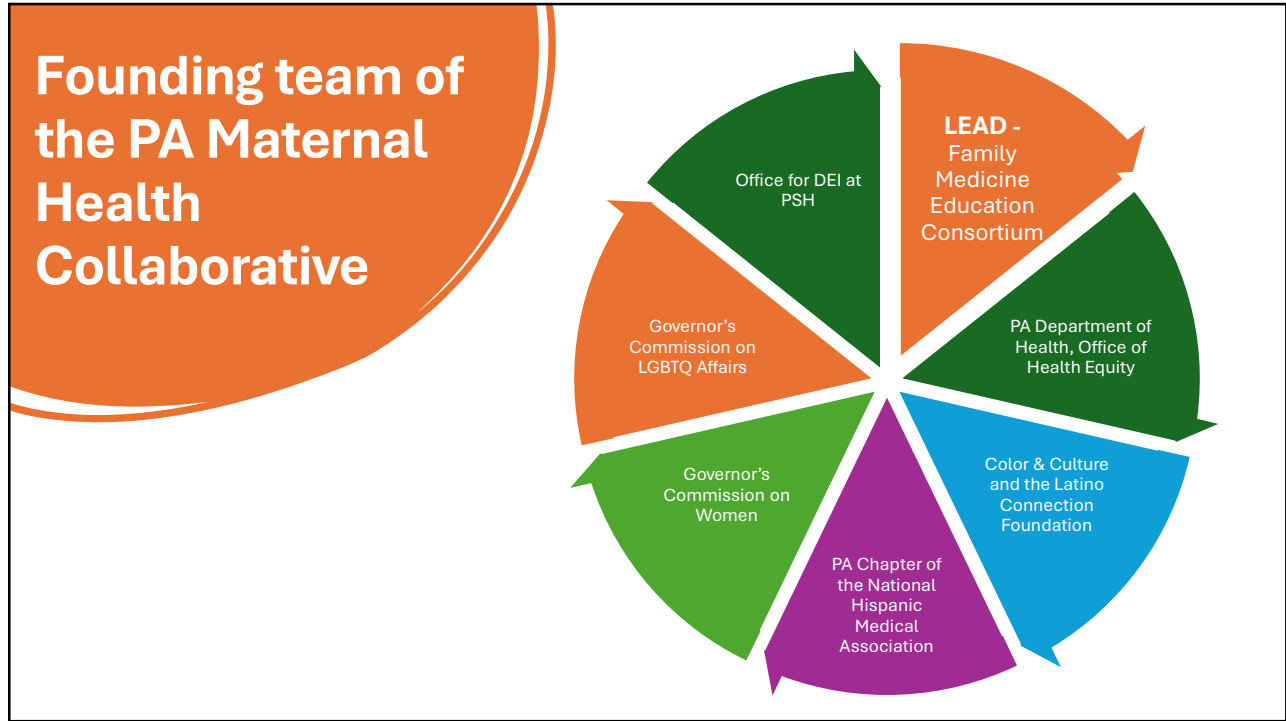
Associate Professor, PSH Family & Community Medicine
Founding President of the PA Chapter of the National Hispanic
Medical Association and Penn State Hispanic Professionals
Association
Member of the Family Medicine Education Consortium Board
Founding Member of the PA Maternal Health Collaborative
PSH HMC ASOG Meeting | 08/15/24

1

Agenda


- Goals for the meeting
 - Partners Involved
 - Pennsylvania Maternal Health Priorities
 - Maternal Health Success in Action – Brief Examples
 - IMPLICIT Project
 - Philly Joy Bank
 - Breakout Groups
 - Next Steps and Adjournment
- 


2





3

Founding team of the PA Maternal Health Collaborative









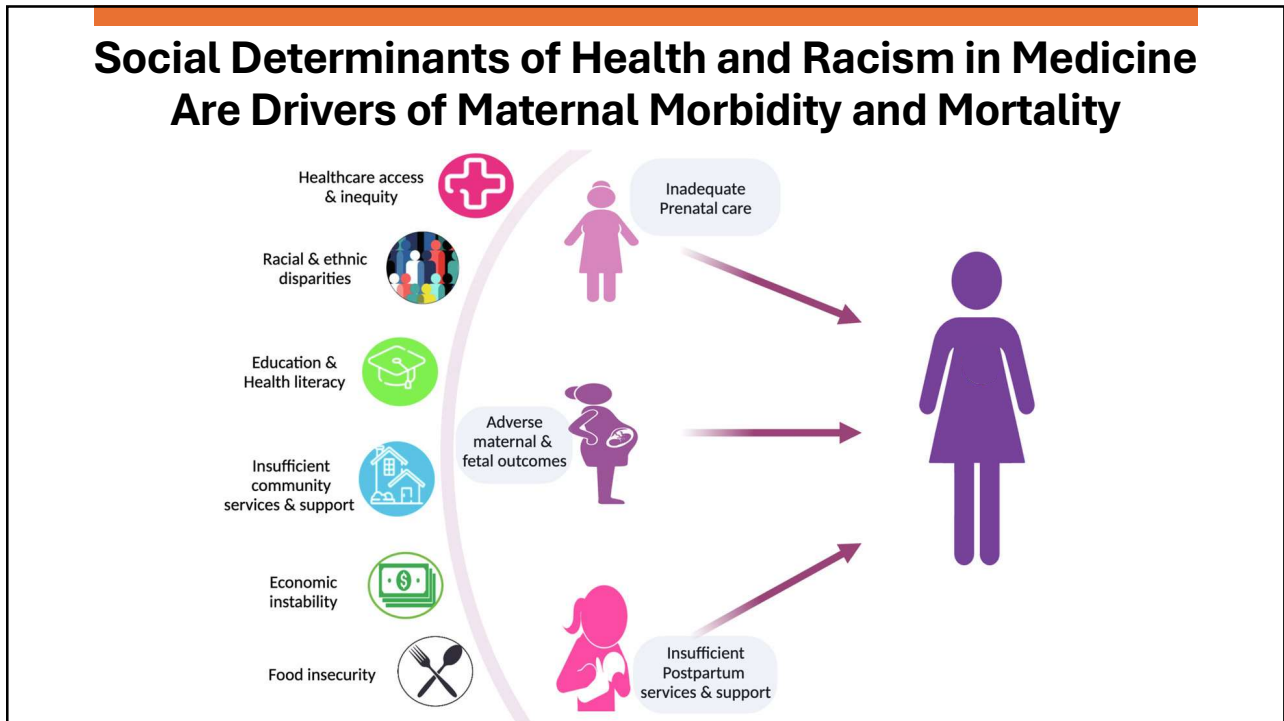
- Office of Health Equity, Pennsylvania Department of Public Health
- Family Medicine Education Consortium (FMEC)
- Penn State Health
- Latino Connection
- Governor's Advisory Commission on Women
- Governor's Advisory Commission on LGBTQ Affairs
- National Hispanic Medical Association, Pennsylvania Chapter

4

Maternal mortality is devastating because 80% are preventable.

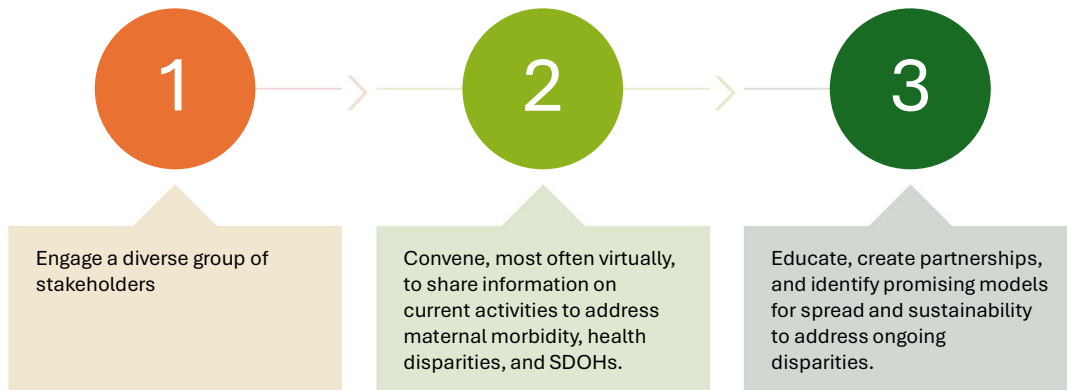
- Maternal mortality is an indicator of our nation’s health.
- While the rates of maternal mortality for all racial and ethnic groups in the US has decreased since 2020, disparities persist for Black women.
- In 2022, there were 49.5 deaths per 100,000 live births for Black women, compared with 19 deaths per 100,000 for White women, 16.9 per 100,000 for Hispanic women and 13.2 per 100,000 for Asian women.
- **In PA the rate for Black women rises to 163 per 100,000 live births.**

5



6

Goals



7

Maternal Health Success in Action

- IMPLICIT Network (Interventions to Minimize Preterm and Low Birth Weight Infants using Continuous Quality Improvement Techniques)
- Philly Joy Bank



8

Breakout Groups

- What is happening now that we can build on?
- What is one goal we can accomplish by the end of 2025?
- What is systemic and too large to address immediately but should be our ultimate goal?

Please identify a notetaker who will be asked to briefly report out after the breakouts, as time allows.

Also feel free to record your own notes and put them in the chat after we reconvene.